



**ELECTRONIC COPY**

LG751516229  
Report verification at igi.org



November 26, 2025

IGI Report Number **LG751516229**

Description **LABORATORY GROWN DIAMOND**

Shape and Cutting Style **EMERALD CUT**

Measurements **9.55 X 6.97 X 4.76 MM**

**GRADING RESULTS**

Carat Weight **3.06 CARATS**

Color Grade **H**

Clarity Grade **VS 1**

**LABORATORY GROWN DIAMOND REPORT**

November 26, 2025

IGI Report Number **LG751516229**

Description **LABORATORY GROWN DIAMOND**

Shape and Cutting Style **EMERALD CUT**

Measurements **9.55 X 6.97 X 4.76 MM**

**GRADING RESULTS**

Carat Weight **3.06 CARATS**

Color Grade **H**

Clarity Grade **VS 1**

**ADDITIONAL GRADING INFORMATION**

Polish **EXCELLENT**

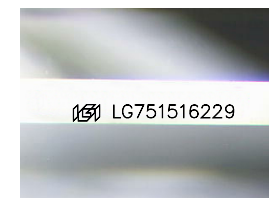
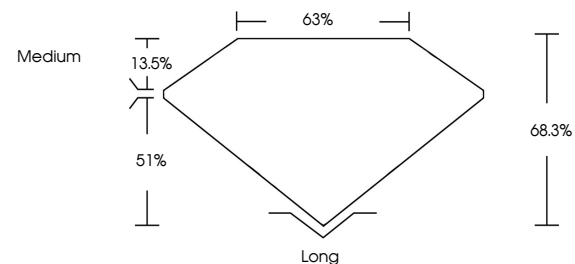
Symmetry **EXCELLENT**

Fluorescence **NONE**

Inscription(s) **IGI LG751516229**

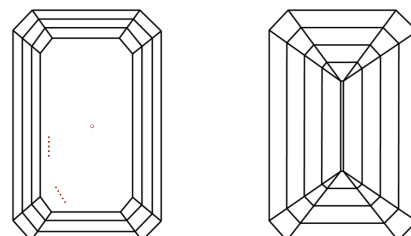
Comments: This Laboratory Grown Diamond was created by Chemical Vapor Deposition (CVD) growth process. Type IIa

**PROPORTIONS**



Sample Image Used

**CLARITY CHARACTERISTICS**



**KEY TO SYMBOLS**

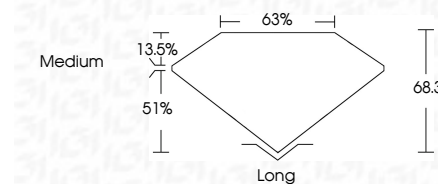
Red symbols indicate internal characteristics.  
Green symbols indicate external characteristics.

**COLOR**

D E F G H I J Faint Very Light Light

**CLARITY**

FL	IF	VS <sup>1-2</sup>	VS <sup>1-2</sup>	SI <sup>1-2</sup>	I <sup>1-3</sup>
Flawless	Internally Flawless	Very Very Slightly Included	Very Slightly Included	Slightly Included	Included



**ADDITIONAL GRADING INFORMATION**

Polish **EXCELLENT**

Symmetry **EXCELLENT**

Fluorescence **NONE**

Inscription(s) **IGI LG751516229**

Comments: This Laboratory Grown Diamond was created by Chemical Vapor Deposition (CVD) growth process. Type IIa



**IGI**

November 26, 2025	IGI Report No LG751516229	3.06 CARATS	H	VS 1	68.3%	63%	Medium	Long	EXCELLENT	EXCELLENT	NONE	IGI LG751516229
EMERALD CUT	9.55 X 6.97 X 4.76 MM	Carat Weight	Color Grade	Clarity Grade	Table	Depth	Girdle	Culet	Polish	Symmetry	Fluorescence	Inscription(s)

Comments: This Laboratory Grown Diamond was created by Chemical Vapor Deposition (CVD) growth process. Type IIa