



ELECTRONIC COPY

LG751510752
Report verification at igi.org



November 24, 2025

IGI Report Number **LG751510752**

Description **LABORATORY GROWN DIAMOND**

Shape and Cutting Style **ROUND BRILLIANT**

Measurements **9.16 - 9.22 X 5.74 MM**

GRADING RESULTS

Carat Weight **3.01 CARATS**

Color Grade **G**

Clarity Grade **VS 1**

Cut Grade **EXCELLENT**

November 24, 2025
IGI Report Number **LG751510752**
Description **LABORATORY GROWN DIAMOND**
Shape and Cutting Style **ROUND BRILLIANT**
Measurements **9.16 - 9.22 X 5.74 MM**

GRADING RESULTS

Carat Weight **3.01 CARATS**

Color Grade **G**

Clarity Grade **VS 1**

Cut Grade **EXCELLENT**

ADDITIONAL GRADING INFORMATION

Polish **EXCELLENT**

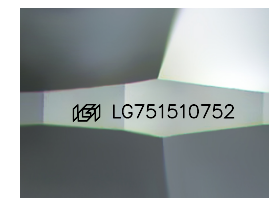
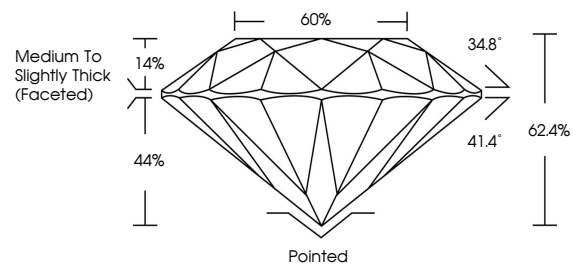
Symmetry **EXCELLENT**

Fluorescence **NONE**

Inscription(s) **IGI LG751510752**

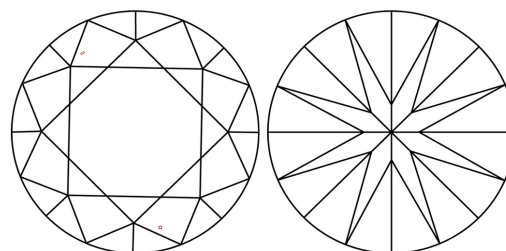
Comments: This Laboratory Grown Diamond was created by Chemical Vapor Deposition (CVD) growth process.
Type IIa

PROPORTIONS



Sample Image Used

CLARITY CHARACTERISTICS



KEY TO SYMBOLS

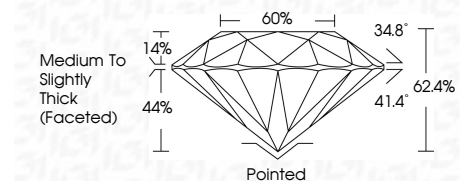
Red symbols indicate internal characteristics.
Green symbols indicate external characteristics.

COLOR

D E F G H I J Faint Very Light Light

CLARITY

FL	IF	VS ¹⁻²	VS ¹⁻²	SI ¹⁻²	I ¹⁻³
Flawless	Internally Flawless	Very Very Slightly Included	Very Slightly Included	Slightly Included	Included



ADDITIONAL GRADING INFORMATION

Polish **EXCELLENT**

Symmetry **EXCELLENT**

Fluorescence **NONE**

Inscription(s) **IGI LG751510752**

Comments: This Laboratory Grown Diamond was created by Chemical Vapor Deposition (CVD) growth process.
Type IIa



November 24, 2025	IGI Report No LG751510752	3.01 CARATS	G	VS 1	EXCELLENT	60%	62.4%	Medium To Slightly Thick (Faceted)	Pointed	EXCELLENT	EXCELLENT	NONE	IGI LG751510752
ROUND BRILLIANT	9.16 - 9.22 X 5.74 MM	Carat Weight	Color Grade	Clarity Grade	Cut Grade	Table	Depth	Grade	Culet	Polish	Symmetry	Fluorescence	Inscription(s)

Comments: This Laboratory Grown Diamond was created by Chemical Vapor Deposition (CVD) growth process.
Type IIa