

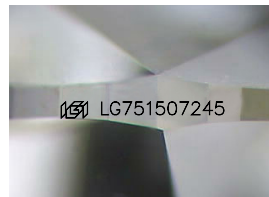
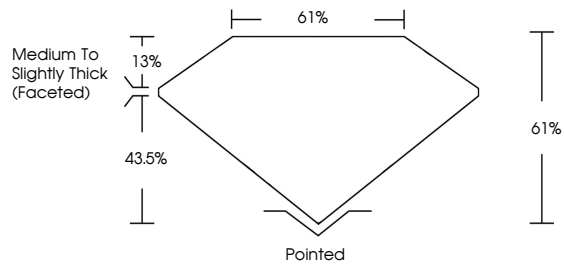


**INTERNATIONAL
GEMOLOGICAL
INSTITUTE**

ELECTRONIC COPY

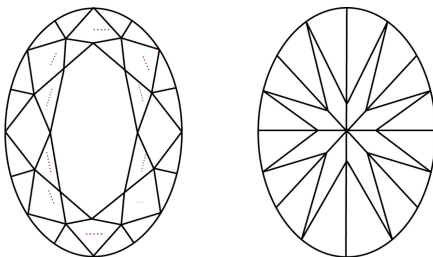
LG751507245
Report verification at igi.org

PROPORTIONS



Sample Image Used

CLARITY CHARACTERISTICS



KEY TO SYMBOLS

Red symbols indicate internal characteristics.
Green symbols indicate external characteristics.

COLOR

D E F G H I J Faint Very Light Light

CLARITY

FL IF WS¹⁻² VS¹⁻² SI¹⁻² I¹⁻³

Flawless	Internally Flawless	Very Very Slightly Included	Very Slightly Included	Slightly Included	Included
----------	---------------------	-----------------------------	------------------------	-------------------	----------

LABORATORY GROWN DIAMOND REPORT



November 26, 2025

IGI Report Number **LG751507245**

Description	LABORATORY GROWN DIAMOND
-------------	--------------------------

Shape and Cutting Style **OVAL BRILLIANT**

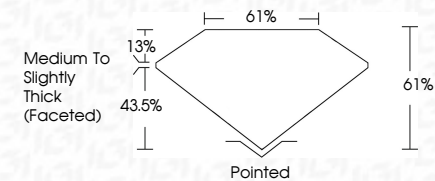
Measurements 10.34 X 7.25 X 4.42 MM

GRADING RESULTS

Carat Weight **2.09 CARATS**

Color Grade **F**

Clarity Grade VS 2



ADDITIONAL GRADING INFORMATION

Polish **EXCELLENT**Symmetry **EXCELLENT**Fluorescence **NONE**Inscription(s) LG75150724

Comments: This Laboratory Grown Diamond was created by Chemical Vapor Deposition (CVD) growth process.
Type IIa



IGI



© IGI 2020, International Gemological Institute

FD - 10 20

www.igi.org

THIS DOCUMENT WAS PRODUCED WITH THE FOLLOWING SECURITY MEASURES: SPECIAL DOCUMENT PAPER, INK SCREENS, WATERMARK, BACKGROUND DESIGNS, HOLOGRAM AND OTHER SECURITY FEATURES NOT LISTED AND DO EXCEED DOCUMENT SECURITY INDUSTRY GUIDELINES

November 26, 2025
IGI Report No LG751507245
OVAL BRILLIANT

10.34 X 7.25 X 4.42 MM		2.09 CARATS	
Carat Weight	Color Grade	Clarity Grade	VS 2
Depth		Depth	61%
Table		Table	61%
Girdle		Girdle	Medium To Slightly Thick (coated)
Culet		Culet	Pointed
Polish		Polish	EXCELLENT
Symmetry		Symmetry	EXCELLENT
Fluorescence		Fluorescence	NONE
Inscriptions(s)		Inscriptions(s)	4411 G741707245

Comments:
This Laboratory Grown Diamond was created by Chemical Vapor Deposition (CVD) growth process.