



ELECTRONIC COPY

LABORATORY GROWN DIAMOND REPORT

December 3, 2025	
IGI Report Number	LG751506379
Description	LABORATORY GROWN DIAMOND
Shape and Cutting Style	SQUARE CUSHION MODIFIED BRILLIANT
Measurements	6.85 X 6.69 X 4.34 MM

GRADING RESULTS

Carat Weight	1.51 CARAT
Color Grade	D
Clarity Grade	INTERNALLY FLAWLESS
Cut Grade	EXCELLENT

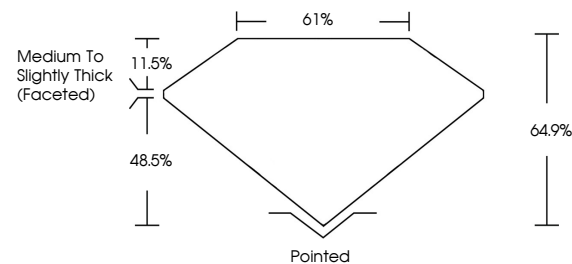
ADDITIONAL GRADING INFORMATION

Polish	EXCELLENT
Symmetry	EXCELLENT
Fluorescence	NONE
Inscription(s)	 LG751506379

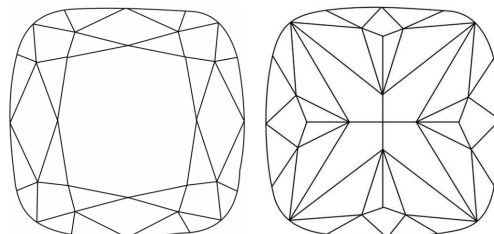
Comments: As Grown - No indication of post-growth treatment.
This Laboratory Grown Diamond was created by High Pressure High Temperature (HPHT) growth process.
Type II

LG751506379
Report verification at igi.org

PROPORTIONS

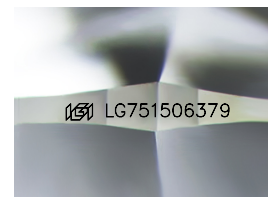


CLARITY CHARACTERISTICS



KEY TO SYMBOLS

Red symbols indicate internal characteristics.
Green symbols indicate external characteristics.



Sample Image Used

COLOR

D E F G H I J Faint Very Light Light

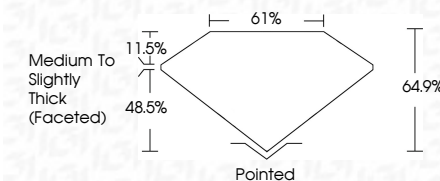
CLARITY

FL	IF	VVS ¹⁻²	VS ¹⁻²	SI ¹⁻²	I ¹⁻³
Flawless	Internally Flawless	Very Very Slightly Included	Very Slightly Included	Slightly Included	Included

LABORATORY GROWN DIAMOND REPORT



December 3, 2025	
IGI Report Number	LG751506379
Description	LABORATORY GROWN DIAMOND
Shape and Cutting Style	SQUARE CUSHION MODIFIED BRILLIANT
Measurements	6.85 X 6.69 X 4.34 MM
GRADING RESULTS	
Carat Weight	1.51 CARAT
Color Grade	D
Clarity Grade	INTERNALLY FLAWLESS
Cut Grade	EXCELLENT



ADDITIONAL GRADING INFORMATION

Polish	EXCELLENT
Symmetry	EXCELLENT
Fluorescence	NONE
Inscription(s)	(G) LG751506379
Comments: As Grown - No indication of post-growth treatment.	
This Laboratory Grown Diamond was created by High Pressure High Temperature (HPHT) growth process.	
Type II	



© IGI 2020, International Gemological Institute

FD - 10 20

www.igi.org



THIS DOCUMENT WAS PRODUCED WITH THE FOLLOWING SECURITY MEASURES: SPECIAL DOCUMENT PAPER, INK SCREENS, WATERMARK, BACKGROUND DESIGNS, HOLOGRAM AND OTHER SECURITY FEATURES NOT LISTED AND DO EXCEED DOCUMENT SECURITY INDUSTRY GUIDELINE

December 3, 2025
 IGI Report No LG7616
 1.85 X 6.69 X 4.34 MPa
 Color Grade
 Coat Weight
 Carburizing
 Oil Grade
 Cut Grade
 Depth
 Table
 Grade
 Grits
 Culet
 Polish
 Symmetry
 Fluorescence
 Inclusion(s)
 Comments:
 Not Grown - No Indicators
 Laboratory Growth
 Manufactured by High Pressure
 Temperature (HPHT)
 None