



LABORATORY GROWN DIAMOND REPORT

November 24, 2025
 IGI Report Number **LG751505335**
 Description **LABORATORY GROWN DIAMOND**
 Shape and Cutting Style **HEXAGONAL MODIFIED STEP CUT**
 Measurements **7.12 X 2.93 X 1.83 MM**

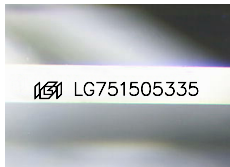
GRADING RESULTS

Carat Weight **0.30 CARAT**
 Color Grade **E**
 Clarity Grade **INTERNALLY FLAWLESS**

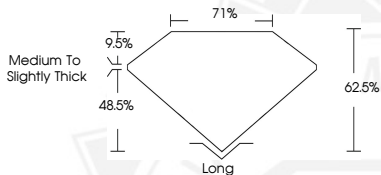
ADDITIONAL GRADING INFORMATION

Polish **EXCELLENT**
 Symmetry **VERY GOOD**
 Fluorescence **NONE**
 Inscription(s) **IGI LG751505335**

Comments: This Laboratory Grown Diamond was created by Chemical Vapor Deposition (CVD) growth process. Type IIa



Sample Image Used



November 24, 2025
 IGI Report Number **LG751505335**
 HEXAGONAL MODIFIED STEP CUT
 LABORATORY GROWN DIAMOND
 7.12 X 2.93 X 1.83 MM
 Carat Weight **0.30 CARAT**
 Color Grade **E**
 Clarity Grade **I.F.**
 Polish **EXCELLENT**
 Symmetry **VERY GOOD**
 Fluorescence **NONE**
 Inscription(s) **IGI LG751505335**

Comments: This Laboratory Grown Diamond was created by Chemical Vapor Deposition (CVD) growth process. Type IIa



November 24, 2025
 IGI Report Number **LG751505335**
 HEXAGONAL MODIFIED STEP CUT
 LABORATORY GROWN DIAMOND
 7.12 X 2.93 X 1.83 MM
 Carat Weight **0.30 CARAT**
 Color Grade **E**
 Clarity Grade **I.F.**
 Polish **EXCELLENT**
 Symmetry **VERY GOOD**
 Fluorescence **NONE**
 Inscription(s) **IGI LG751505335**

Comments: This Laboratory Grown Diamond was created by Chemical Vapor Deposition (CVD) growth process. Type IIa



THIS DOCUMENT WAS PRODUCED WITH THE FOLLOWING SECURITY MEASURES: SPECIAL DOCUMENT PAPER, INK SCREENS, WATERMARK, BACKGROUND DESIGNS, HOLOGRAM AND OTHER SECURITY FEATURES NOT LISTED AND DO EXCEED DOCUMENT SECURITY INDUSTRY GUIDELINES.