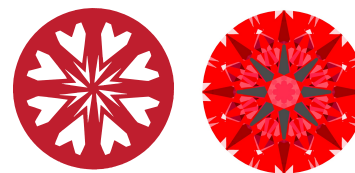




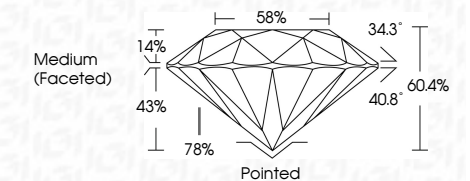
Light Performance Grade: Exceptional



Structured Light Environment Representation



November 22, 2025 IGI Report Number LG750598829 Description LABORATORY GROWN DIAMOND Shape and Cutting Style ROUND BRILLIANT Measurements 9.04 - 9.08 X 5.47 MM GRADING RESULTS Carat Weight 2.73 CARATS Color Grade D Clarity Grade VVS 1 Cut Grade IDEAL



ADDITIONAL GRADING INFORMATION Polish EXCELLENT Symmetry EXCELLENT Fluorescence NONE Inscription(s) IGI LG750598829 Comments: HEARTS & ARROWS This Laboratory Grown Diamond was created by Chemical Vapor Deposition (CVD) growth process. Type IIa



Summary table of diamond characteristics: November 22, 2025, IGI Report No. LG750598829, ROUND BRILLIANT, 9.04 - 9.08 X 5.47 MM, 2.73 CARATS, Color Grade D, Clarity Grade VVS 1, Cut Grade IDEAL, Table 58%, Depth 60.4%, Grade Medium (Faceted), Polish EXCELLENT, Symmetry EXCELLENT, Fluorescence NONE, Inscription(s) IGI LG750598829, Comments: HEARTS & ARROWS This Laboratory Grown Diamond was created by Chemical Vapor Deposition (CVD) growth process. Type IIa

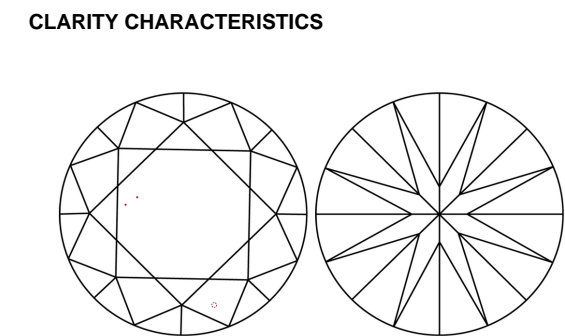
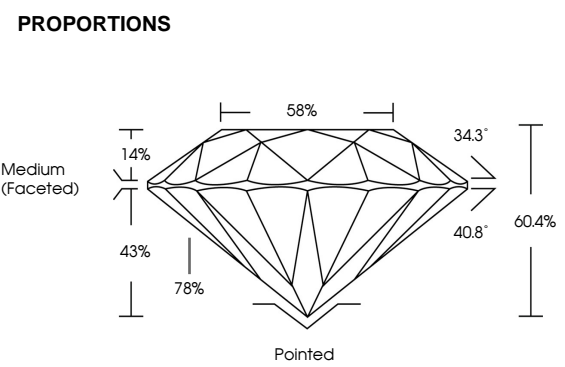
ELECTRONIC COPY LABORATORY GROWN DIAMOND REPORT

November 22, 2025 IGI Report Number LG750598829 Description LABORATORY GROWN DIAMOND Shape and Cutting Style ROUND BRILLIANT Measurements 9.04 - 9.08 x 5.47 mm

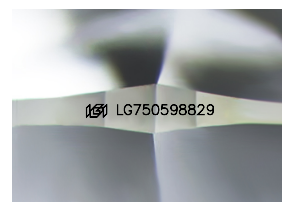
GRADING RESULTS Carat Weight 2.73 CARATS Color Grade D Clarity Grade VVS 1 Cut Grade IDEAL

ADDITIONAL GRADING INFORMATION Polish EXCELLENT Symmetry EXCELLENT Fluorescence NONE Inscription(s) IGI LG750598829

Comments: HEARTS & ARROWS This Laboratory Grown Diamond was created by Chemical Vapor Deposition (CVD) growth process. Type IIa



KEY TO SYMBOLS Red symbols indicate internal characteristics. Green symbols indicate external characteristics.



Sample Image Used

