



ELECTRONIC COPY

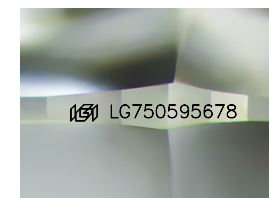
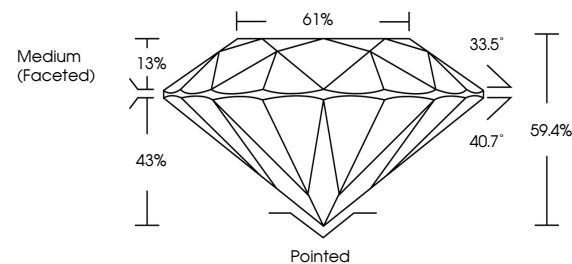
LG750595678
Report verification at igi.org



November 24, 2025
IGI Report Number **LG750595678**
Description **LABORATORY GROWN DIAMOND**
Shape and Cutting Style **ROUND BRILLIANT**
Measurements **9.39 - 9.41 X 5.58 MM**
GRADING RESULTS
Carat Weight **3.00 CARATS**
Color Grade **G**
Clarity Grade **VVS 2**
Cut Grade **EXCELLENT**

November 24, 2025
IGI Report Number **LG750595678**
Description **LABORATORY GROWN DIAMOND**
Shape and Cutting Style **ROUND BRILLIANT**
Measurements **9.39 - 9.41 X 5.58 MM**

PROPORTIONS

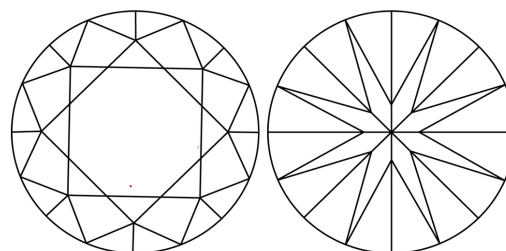


Sample Image Used

GRADING RESULTS

Carat Weight **3.00 CARATS**
Color Grade **G**
Clarity Grade **VVS 2**
Cut Grade **EXCELLENT**

CLARITY CHARACTERISTICS



KEY TO SYMBOLS

Red symbols indicate internal characteristics.
Green symbols indicate external characteristics.

ADDITIONAL GRADING INFORMATION

Polish **EXCELLENT**
Symmetry **EXCELLENT**
Fluorescence **NONE**
Inscription(s) **IGI LG750595678**

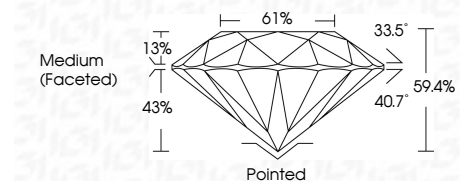
Comments: This Laboratory Grown Diamond was created by Chemical Vapor Deposition (CVD) growth process.
Type IIa

COLOR

D E F G H I J Faint Very Light Light

CLARITY

FL	IF	VVS ¹⁻²	VS ¹⁻²	SI ¹⁻²	I ¹⁻³
Flawless	Internally Flawless	Very Very Slightly Included	Very Slightly Included	Slightly Included	Included



ADDITIONAL GRADING INFORMATION

Polish **EXCELLENT**
Symmetry **EXCELLENT**
Fluorescence **NONE**
Inscription(s) **IGI LG750595678**
Comments: This Laboratory Grown Diamond was created by Chemical Vapor Deposition (CVD) growth process.
Type IIa



IGI



November 24, 2025
IGI Report No LG750595678
ROUND BRILLIANT
9.39 - 9.41 X 5.58 MM
3.00 CARATS
G
VVS 2
EXCELLENT
59.4%
61%
Medium (Faceted)
Pointed
EXCELLENT
EXCELLENT
NONE
IGI LG750595678
Comments: This Laboratory Grown Diamond was created by Chemical Vapor Deposition (CVD) growth process.
Type IIa