



ELECTRONIC COPY

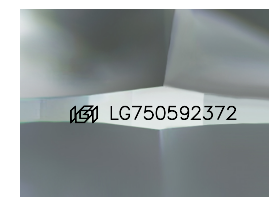
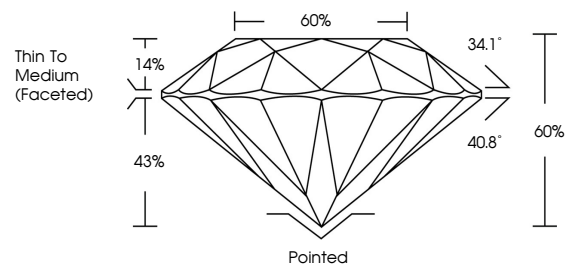
LG750592372
Report verification at igi.org



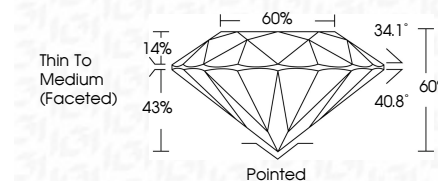
November 24, 2025
IGI Report Number **LG750592372**
Description **LABORATORY GROWN DIAMOND**
Shape and Cutting Style **ROUND BRILLIANT**
Measurements **9.54 - 9.65 X 5.74 MM**
GRADING RESULTS
Carat Weight **3.20 CARATS**
Color Grade **D**
Clarity Grade **VVS 1**
Cut Grade **IDEAL**

November 24, 2025
IGI Report Number **LG750592372**
Description **LABORATORY GROWN DIAMOND**
Shape and Cutting Style **ROUND BRILLIANT**
Measurements **9.54 - 9.65 X 5.74 MM**
GRADING RESULTS
Carat Weight **3.20 CARATS**
Color Grade **D**
Clarity Grade **VVS 1**
Cut Grade **IDEAL**

PROPORTIONS



Sample Image Used



ADDITIONAL GRADING INFORMATION
Polish **EXCELLENT**
Symmetry **EXCELLENT**
Fluorescence **NONE**
Inscription(s) **IGI LG750592372**

Comments: This Laboratory Grown Diamond was created by Chemical Vapor Deposition (CVD) growth process. Type IIa

COLOR

D E F G H I J Faint Very Light Light

CLARITY

FL	IF	VVS ¹⁻²	VS ¹⁻²	SI ¹⁻²	I ¹⁻³
Flawless	Internally Flawless	Very Very Slightly Included	Very Slightly Included	Slightly Included	Included

ADDITIONAL GRADING INFORMATION

Polish **EXCELLENT**
Symmetry **EXCELLENT**
Fluorescence **NONE**
Inscription(s) **IGI LG750592372**
Comments: This Laboratory Grown Diamond was created by Chemical Vapor Deposition (CVD) growth process. Type IIa



November 24, 2025
IGI Report No **LG750592372**
ROUND BRILLIANT
9.54 - 9.65 X 5.74 MM
3.20 CARATS
D
VVS 1
IDEAL
60%
60%
Thin To Medium (Faceted)
Pointed
EXCELLENT
EXCELLENT
NONE
NONE
IGI LG750592372
Comments: This Laboratory Grown Diamond was created by Chemical Vapor Deposition (CVD) growth process. Type IIa