



LABORATORY GROWN DIAMOND REPORT

November 25, 2025
 IGI Report Number **LG750590967**
 Description **LABORATORY GROWN DIAMOND**
 Shape and Cutting Style **OVAL BRILLIANT**
 Measurements **7.55 X 5.44 X 3.17 MM**

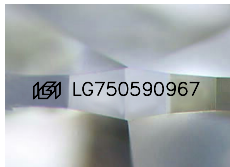
GRADING RESULTS

Carat Weight **0.83 CARAT**
 Color Grade **D**
 Clarity Grade **VVS 2**

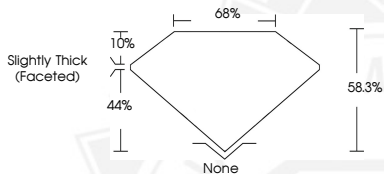
ADDITIONAL GRADING INFORMATION

Polish **VERY GOOD**
 Symmetry **GOOD**
 Fluorescence **NONE**
 Inscription(s) **IGI LG750590967**

Comments: This Laboratory Grown Diamond was created by
 Chemical Vapor Deposition (CVD) growth process.
 Type IIa



Sample Image Used



November 25, 2025
 IGI Report Number **LG750590967**
OVAL BRILLIANT
LABORATORY GROWN DIAMOND
7.55 X 5.44 X 3.17 MM
 Carat Weight **0.83 CARAT**
 Color Grade **D**
 Clarity Grade **VVS 2**
 Polish **VERY GOOD**
 Symmetry **GOOD**
 Fluorescence **NONE**
 Inscription(s) **IGI LG750590967**

Comments: This Laboratory Grown
 Diamond was created by
 Chemical Vapor Deposition (CVD)
 growth process. Type IIa



November 25, 2025
 IGI Report Number **LG750590967**
OVAL BRILLIANT
LABORATORY GROWN DIAMOND
7.55 X 5.44 X 3.17 MM
 Carat Weight **0.83 CARAT**
 Color Grade **D**
 Clarity Grade **VVS 2**
 Polish **VERY GOOD**
 Symmetry **GOOD**
 Fluorescence **NONE**
 Inscription(s) **IGI LG750590967**

Comments: This Laboratory Grown
 Diamond was created by
 Chemical Vapor Deposition (CVD)
 growth process. Type IIa



THIS DOCUMENT WAS PRODUCED WITH THE FOLLOWING SECURITY MEASURES: SPECIAL DOCUMENT PAPER, INK SCREENS, WATERMARK, BACKGROUND DESIGNS, HOLOGRAM AND OTHER SECURITY FEATURES NOT LISTED AND DO EXCEED DOCUMENT SECURITY INDUSTRY GUIDELINES.