



November 25, 2025

IGI Report Number **LG750590917**

**OVAL BRILLIANT
LABORATORY GROWN DIAMOND
7.22 X 5.26 X 3.28 MM**

Carat Weight	0.81 CARAT
Color Grade	E
Clarity Grade	VVS 2
Polish	VERY GOOD
Symmetry	VERY GOOD
Fluorescence	NONE
Inscription(s)	IGI LG750590917

Comments: This Laboratory Grown Diamond was created by Chemical Vapor Deposition (CVD) growth process. Type IIa

LABORATORY GROWN DIAMOND REPORT

November 25, 2025

IGI Report Number **LG750590917**

Description **LABORATORY GROWN DIAMOND**

Shape and Cutting Style **OVAL BRILLIANT**

Measurements **7.22 X 5.26 X 3.28 MM**

GRADING RESULTS

Carat Weight **0.81 CARAT**

Color Grade **E**

Clarity Grade **VVS 2**

ADDITIONAL GRADING INFORMATION

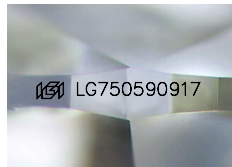
Polish **VERY GOOD**

Symmetry **VERY GOOD**

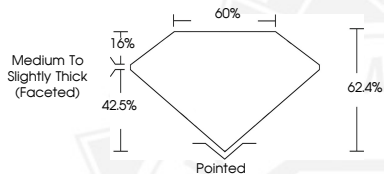
Fluorescence **NONE**

Inscription(s) **IGI LG750590917**

Comments: This Laboratory Grown Diamond was created by Chemical Vapor Deposition (CVD) growth process. Type IIa



Sample Image Used



November 25, 2025

IGI Report Number **LG750590917**

**OVAL BRILLIANT
LABORATORY GROWN DIAMOND
7.22 X 5.26 X 3.28 MM**

Carat Weight	0.81 CARAT
Color Grade	E
Clarity Grade	VVS 2
Polish	VERY GOOD
Symmetry	VERY GOOD
Fluorescence	NONE
Inscription(s)	IGI LG750590917

Comments: This Laboratory Grown Diamond was created by Chemical Vapor Deposition (CVD) growth process. Type IIa



THIS DOCUMENT WAS PRODUCED WITH THE FOLLOWING SECURITY MEASURES: SPECIAL DOCUMENT PAPER, INK SCREENS, WATERMARK, BACKGROUND DESIGNS, HOLOGRAM AND OTHER SECURITY FEATURES NOT LISTED AND DO EXCEED DOCUMENT SECURITY INDUSTRY GUIDELINES.