



November 27, 2025

IGI Report Number LG750589225

**ROUND BRILLIANT
LABORATORY GROWN DIAMOND
6.20 - 6.23 X 3.76 MM**

**0.88 CARAT
F
VVS 2
IDEAL
EXCELLENT
EXCELLENT
NONE
IGI LG750589225**

Comments: As Grown - No indication of post-growth treatment. This Laboratory Grown Diamond was created by High Pressure High Temperature (HPHT) growth process. Type II

LABORATORY GROWN DIAMOND REPORT

November 27, 2025
IGI Report Number **LG750589225**
Description **LABORATORY GROWN DIAMOND**
Shape and Cutting Style **ROUND BRILLIANT**
Measurements **6.20 - 6.23 X 3.76 MM**

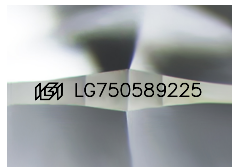
GRADING RESULTS

Carat Weight **0.88 CARAT**
Color Grade **F**
Clarity Grade **VVS 2**
Cut Grade **IDEAL**

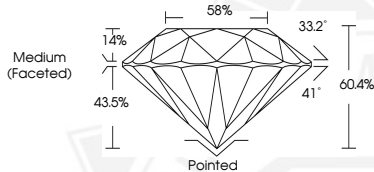
ADDITIONAL GRADING INFORMATION

Polish **EXCELLENT**
Symmetry **EXCELLENT**
Fluorescence **NONE**
Inscription(s) **IGI LG750589225**

Comments: As Grown - No indication of post-growth treatment. This Laboratory Grown Diamond was created by High Pressure High Temperature (HPHT) growth process. Type II



Sample Image Used



November 27, 2025

IGI Report Number LG750589225

**ROUND BRILLIANT
LABORATORY GROWN DIAMOND
6.20 - 6.23 X 3.76 MM**

**0.88 CARAT
F
VVS 2
IDEAL
EXCELLENT
EXCELLENT
NONE
IGI LG750589225**

Comments: As Grown - No indication of post-growth treatment. This Laboratory Grown Diamond was created by High Pressure High Temperature (HPHT) growth process. Type II

THIS DOCUMENT WAS PRODUCED WITH THE FOLLOWING SECURITY MEASURES: SPECIAL DOCUMENT PAPER, INK SCREENS, WATERMARK, BACKGROUND DESIGNS, HOLOGRAM AND OTHER SECURITY FEATURES NOT LISTED AND DO EXCEED DOCUMENT SECURITY INDUSTRY GUIDELINES.

For terms & conditions and to verify this report, please visit www.igi.org