



ELECTRONIC COPY

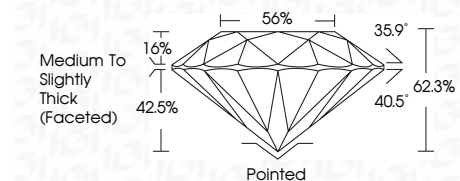
LG750588471
Report verification at igi.org



December 11, 2025
IGI Report Number **LG750588471**
Description **LABORATORY GROWN DIAMOND**
Shape and Cutting Style **ROUND BRILLIANT**
Measurements **8.30 - 8.36 X 5.19 MM**

GRADING RESULTS

Carat Weight **2.22 CARATS**
Color Grade **F**
Clarity Grade **VVS 2**
Cut Grade **IDEAL**



ADDITIONAL GRADING INFORMATION

Polish **EXCELLENT**
Symmetry **EXCELLENT**
Fluorescence **NONE**
Inscription(s) **IGI LG750588471**
Comments: This Laboratory Grown Diamond was created by Chemical Vapor Deposition (CVD) growth process. Type IIa



December 11, 2025
IGI Report No LG750588471
ROUND BRILLIANT
8.30 - 8.36 X 5.19 MM
2.22 CARATS
Color Grade **F**
Clarity Grade **VVS 2**
Cut Grade **IDEAL**
Depth **62.3%**
Table **56%**
Crown Thickness (Faceted) **1.6%**
Crown Angle **35.9°**
Pavilion Angle **40.5°**
Total Depth **62.3%**
Medium To Slightly Thick (Faceted)
Culet **Pointed**
Polish **EXCELLENT**
Symmetry **EXCELLENT**
Fluorescence **NONE**
Inscription(s) **IGI LG750588471**
Comments: This Laboratory Grown Diamond was created by Chemical Vapor Deposition (CVD) growth process. Type IIa

December 11, 2025
IGI Report Number **LG750588471**
Description **LABORATORY GROWN DIAMOND**
Shape and Cutting Style **ROUND BRILLIANT**
Measurements **8.30 - 8.36 X 5.19 MM**

GRADING RESULTS

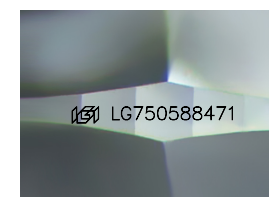
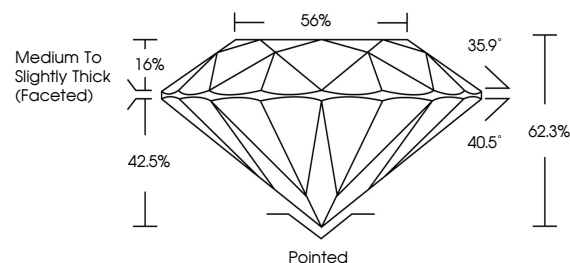
Carat Weight **2.22 CARATS**
Color Grade **F**
Clarity Grade **VVS 2**
Cut Grade **IDEAL**

ADDITIONAL GRADING INFORMATION

Polish **EXCELLENT**
Symmetry **EXCELLENT**
Fluorescence **NONE**
Inscription(s) **IGI LG750588471**

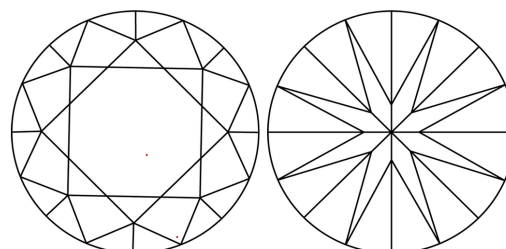
Comments: This Laboratory Grown Diamond was created by Chemical Vapor Deposition (CVD) growth process. Type IIa

PROPORTIONS



Sample Image Used

CLARITY CHARACTERISTICS



KEY TO SYMBOLS

Red symbols indicate internal characteristics.
Green symbols indicate external characteristics.

COLOR

D E F G H I J Faint Very Light Light

CLARITY

FL	IF	VVS ¹⁻²	VS ¹⁻²	SI ¹⁻²	I ¹⁻³
Flawless	Internally Flawless	Very Very Slightly Included	Very Slightly Included	Slightly Included	Included

