



**ELECTRONIC COPY**

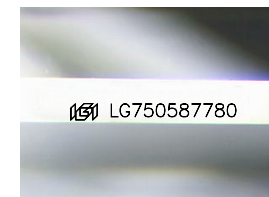
LG750587780  
Report verification at igi.org



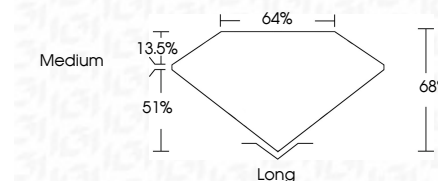
December 9, 2025  
IGI Report Number **LG750587780**  
Description **LABORATORY GROWN DIAMOND**  
Shape and Cutting Style **EMERALD CUT**  
Measurements **11.47 X 7.97 X 5.42 MM**

**GRADING RESULTS**

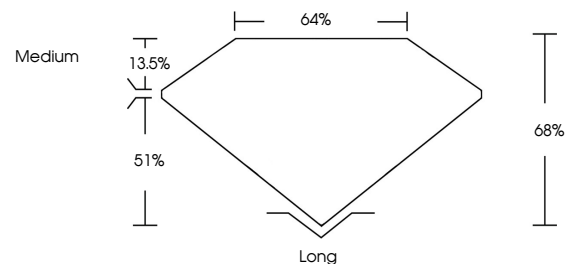
Carat Weight **5.02 CARATS**  
Color Grade **H**  
Clarity Grade **VS 1**



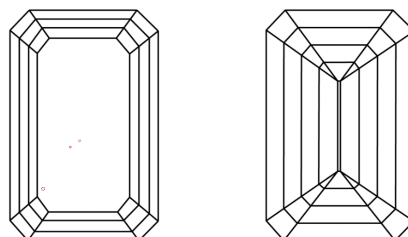
Sample Image Used



**PROPORTIONS**



**CLARITY CHARACTERISTICS**



**KEY TO SYMBOLS**

Red symbols indicate internal characteristics.  
Green symbols indicate external characteristics.

**COLOR**

D E F G H I J Faint Very Light Light

**CLARITY**

FL	IF	VS <sup>1-2</sup>	VS <sup>1-2</sup>	SI <sup>1-2</sup>	I <sup>1-3</sup>
Flawless	Internally Flawless	Very Very Slightly Included	Very Slightly Included	Slightly Included	Included

**ADDITIONAL GRADING INFORMATION**

Polish **EXCELLENT**  
Symmetry **EXCELLENT**  
Fluorescence **NONE**  
Inscription(s) **IGI LG750587780**  
Comments: This Laboratory Grown Diamond was created by Chemical Vapor Deposition (CVD) growth process. Type IIa



December 9, 2025  
IGI Report No **LG750587780**  
**EMERALD CUT**  
11.47 X 7.97 X 5.42 MM  
Carat Weight **5.02 CARATS**  
Color Grade **H**  
Clarity Grade **VS 1**  
Depth **68%**  
Table **51%**  
Girdle **Medium**  
Culet **Long**  
Polish **EXCELLENT**  
Symmetry **EXCELLENT**  
Fluorescence **NONE**  
Inscription(s) **IGI LG750587780**  
Comments: This Laboratory Grown Diamond was created by Chemical Vapor Deposition (CVD) growth process. Type IIa