



**ELECTRONIC COPY**

LG750578019  
Report verification at igi.org



December 25, 2025

IGI Report Number **LG750578019**

Description **LABORATORY GROWN DIAMOND**

Shape and Cutting Style **PRINCESS CUT**

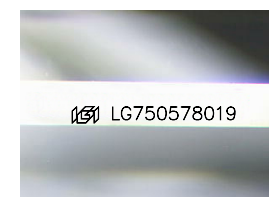
Measurements **6.83 X 6.80 X 4.77 MM**

**GRADING RESULTS**

Carat Weight **1.94 CARAT**

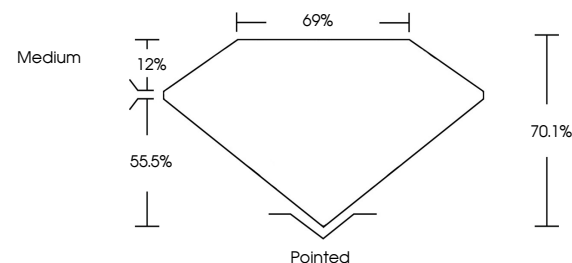
Color Grade **E**

Clarity Grade **SI 1**

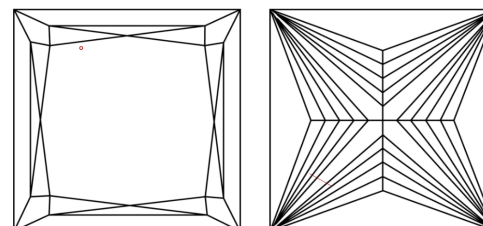


Sample Image Used

**PROPORTIONS**



**CLARITY CHARACTERISTICS**



**KEY TO SYMBOLS**

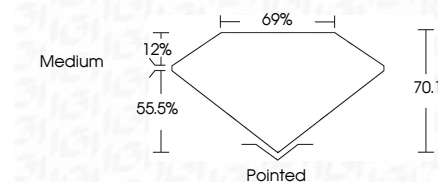
Red symbols indicate internal characteristics.  
Green symbols indicate external characteristics.

**COLOR**

D E F G H I J Faint Very Light Light

**CLARITY**

FL	IF	VS <sup>1-2</sup>	VS <sup>1-2</sup>	SI <sup>1-2</sup>	I <sup>1-3</sup>
Flawless	Internally Flawless	Very Very Slightly Included	Very Slightly Included	Slightly Included	Included



**ADDITIONAL GRADING INFORMATION**

Polish **EXCELLENT**

Symmetry **EXCELLENT**

Fluorescence **NONE**

Inscription(s) **IGI LG750578019**

Comments: This Laboratory Grown Diamond was created by Chemical Vapor Deposition (CVD) growth process. Type IIa



**IGI**



December 25, 2025  
IGI Report No LG750578019  
**PRINCESS CUT**

1.94 CARAT  
E

6.83 X 6.80 X 4.77 MM  
SI 1

Color Grade  
E

Clarity Grade  
SI 1

Table 12%  
Depth 55.5%

Width 69%  
Height 70.1%

Medium

Pointed

EXCELLENT  
EXCELLENT  
NONE

IGI LG750578019

Comments: This Laboratory Grown Diamond was created by Chemical Vapor Deposition (CVD) growth process. Type IIa