



ELECTRONIC COPY

LG750577199
Report verification at igi.org



December 12, 2025

IGI Report Number **LG750577199**

Description **LABORATORY GROWN DIAMOND**

Shape and Cutting Style **EMERALD CUT**

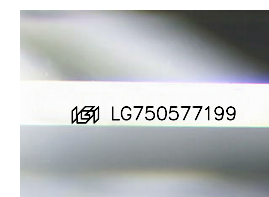
Measurements **13.28 X 9.35 X 6.10 MM**

GRADING RESULTS

Carat Weight **7.51 CARATS**

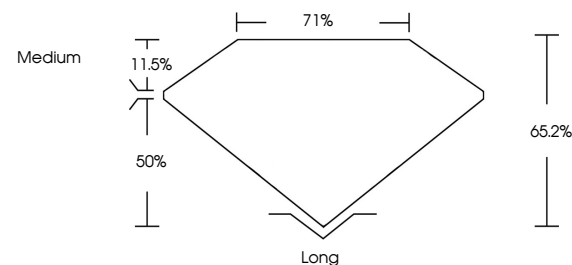
Color Grade **G**

Clarity Grade **VS 1**

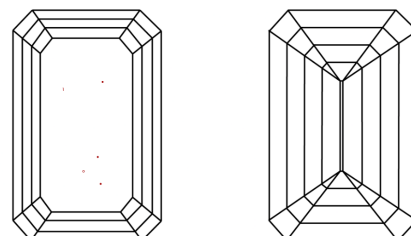


Sample Image Used

PROPORTIONS



CLARITY CHARACTERISTICS



KEY TO SYMBOLS

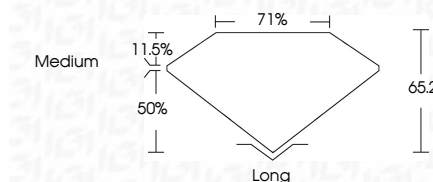
Red symbols indicate internal characteristics.
Green symbols indicate external characteristics.

COLOR

D E F G H I J Faint Very Light Light

CLARITY

FL	IF	VS ¹⁻²	VS ¹⁻²	SI ¹⁻²	I ¹⁻³
Flawless	Internally Flawless	Very Very Slightly Included	Very Slightly Included	Slightly Included	Included



ADDITIONAL GRADING INFORMATION

Polish **EXCELLENT**

Symmetry **EXCELLENT**

Fluorescence

Inscription(s) **IGI LG750577199**

Comments: This Laboratory Grown Diamond was created by Chemical Vapor Deposition (CVD) growth process. Type IIa



IGI



December 12, 2025
IGI Report No. LG750577199
EMERALD CUT

13.28 X 9.35 X 6.10 MM

7.51 CARATS
Color Grade G
Clarity Grade VS 1
Depth 65.2%
Table 71%
Girdle Medium

Culet Long
Polish EXCELLENT
Symmetry EXCELLENT
Fluorescence
Inscription(s) IGI LG750577199

Comments: This Laboratory Grown Diamond was created by Chemical Vapor Deposition (CVD) growth process. Type IIa