



ELECTRONIC COPY

LG750575922
Report verification at igi.org



November 24, 2025
IGI Report Number **LG750575922**
Description **LABORATORY GROWN DIAMOND**
Shape and Cutting Style **RECTANGULAR CUSHION MIXED CUT**
Measurements **13.02 X 8.66 X 5.46 MM**
GRADING RESULTS
Carat Weight **5.42 CARATS**
Color Grade **F**
Clarity Grade **VVS 2**

November 24, 2025
IGI Report Number **LG750575922**
Description **LABORATORY GROWN DIAMOND**
Shape and Cutting Style **RECTANGULAR CUSHION MIXED CUT**
Measurements **13.02 X 8.66 X 5.46 MM**

GRADING RESULTS

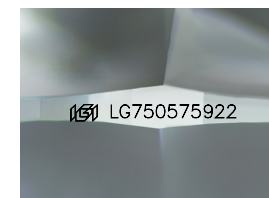
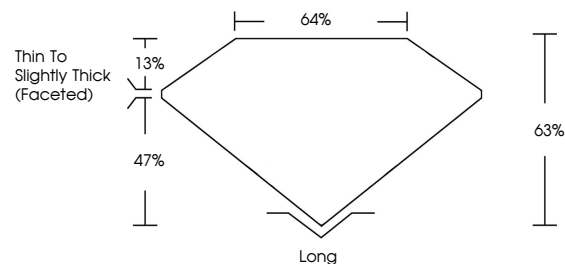
Carat Weight **5.42 CARATS**
Color Grade **F**
Clarity Grade **VVS 2**

ADDITIONAL GRADING INFORMATION

Polish **EXCELLENT**
Symmetry **VERY GOOD**
Fluorescence **NONE**
Inscription(s) **IGI LG750575922**

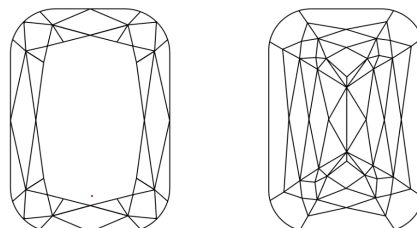
Comments: This Laboratory Grown Diamond was created by Chemical Vapor Deposition (CVD) growth process.
Type IIa

PROPORTIONS



Sample Image Used

CLARITY CHARACTERISTICS



KEY TO SYMBOLS

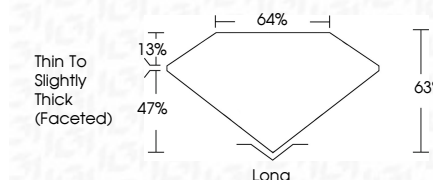
Red symbols indicate internal characteristics.
Green symbols indicate external characteristics.

COLOR

D E F G H I J Faint Very Light Light

CLARITY

FL	IF	VVS ¹⁻²	VS ¹⁻²	SI ¹⁻²	I ¹⁻³
Flawless	Internally Flawless	Very Very Slightly Included	Very Slightly Included	Slightly Included	Included



ADDITIONAL GRADING INFORMATION

Polish **EXCELLENT**
Symmetry **VERY GOOD**
Fluorescence **NONE**
Inscription(s) **IGI LG750575922**
Comments: This Laboratory Grown Diamond was created by Chemical Vapor Deposition (CVD) growth process.
Type IIa



IGI



November 24, 2025
IGI Report No LG750575922
RECTANGULAR CUSHION MIXED CUT
13.02 X 8.66 X 5.46 MM
5.42 CARATS
F
VVS 2
63%
47%
Thin To Slightly Thick (Faceted)
Long
EXCELLENT
VERY GOOD
NONE
IGI LG750575922
Comments: This Laboratory Grown Diamond was created by Chemical Vapor Deposition (CVD) growth process.
Type IIa