



**ELECTRONIC COPY**

LG750573335  
Report verification at igi.org



November 24, 2025

IGI Report Number **LG750573335**

Description **LABORATORY GROWN DIAMOND**

Shape and Cutting Style **PRINCESS CUT**

Measurements **9.41 X 9.23 X 6.76 MM**

**GRADING RESULTS**

Carat Weight **4.89 CARATS**

Color Grade **E**

Clarity Grade **VVS 2**

November 24, 2025  
IGI Report Number **LG750573335**  
Description **LABORATORY GROWN DIAMOND**  
Shape and Cutting Style **PRINCESS CUT**  
Measurements **9.41 X 9.23 X 6.76 MM**

**GRADING RESULTS**

Carat Weight **4.89 CARATS**

Color Grade **E**

Clarity Grade **VVS 2**

**ADDITIONAL GRADING INFORMATION**

Polish **EXCELLENT**

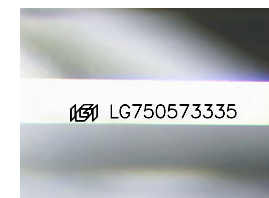
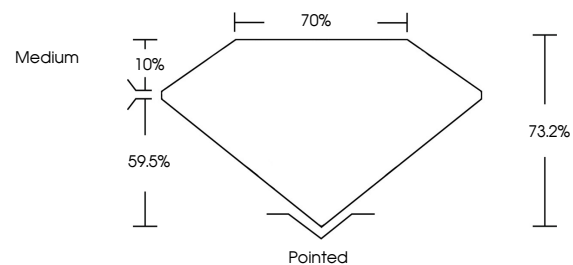
Symmetry **EXCELLENT**

Fluorescence **NONE**

Inscription(s) **IGI LG750573335**

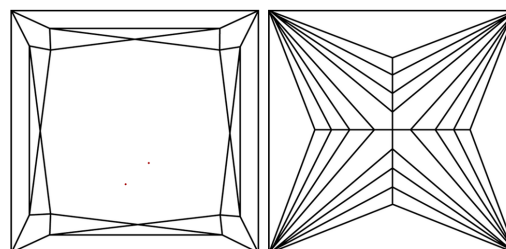
Comments: This Laboratory Grown Diamond was created by Chemical Vapor Deposition (CVD) growth process. Type IIa

**PROPORTIONS**



Sample Image Used

**CLARITY CHARACTERISTICS**



**KEY TO SYMBOLS**

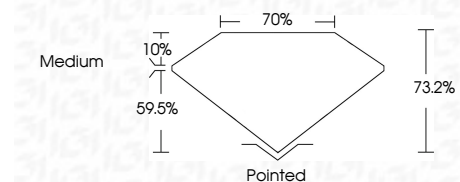
Red symbols indicate internal characteristics.  
Green symbols indicate external characteristics.

**COLOR**

D E F G H I J Faint Very Light Light

**CLARITY**

FL	IF	VVS <sup>1-2</sup>	VS <sup>1-2</sup>	SI <sup>1-2</sup>	I <sup>1-3</sup>
Flawless	Internally Flawless	Very Very Slightly Included	Very Slightly Included	Slightly Included	Included



**ADDITIONAL GRADING INFORMATION**

Polish **EXCELLENT**

Symmetry **EXCELLENT**

Fluorescence **NONE**

Inscription(s) **IGI LG750573335**

Comments: This Laboratory Grown Diamond was created by Chemical Vapor Deposition (CVD) growth process. Type IIa



**IGI**



November 24, 2025  
IGI Report No. LG750573335  
**PRINCESS CUT**

**4.89 CARATS**  
E  
4.89 CARATS

**VVS 2**  
73.2%  
70%  
Medium

Pointed  
**EXCELLENT**  
**EXCELLENT**  
**NONE**  
IGI LG750573335

Comments: This Laboratory Grown Diamond was created by Chemical Vapor Deposition (CVD) growth process. Type IIa