



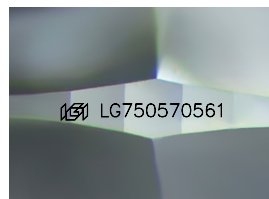
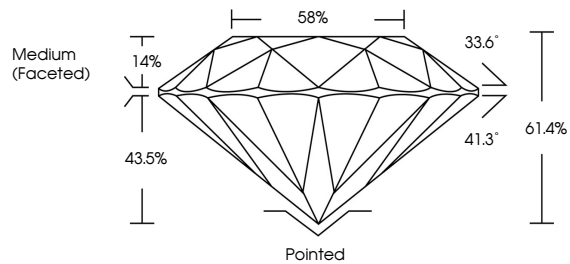
**INTERNATIONAL
GEMOLOGICAL
INSTITUTE**

ELECTRONIC COPY

LABORATORY GROWN DIAMOND REPORT

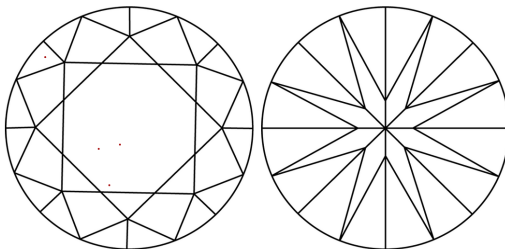
LG750570561
Report verification at igi.org

PROPORTIONS



Sample Image Used

CLARITY CHARACTERISTICS



KEY TO SYMBOLS

Red symbols indicate internal characteristics.
Green symbols indicate external characteristics.

COLOR

D E F G H I J Faint Very Light Light

CLARITY

FL IF WS¹⁻² VS¹⁻² SI¹⁻² I¹⁻³

Flawless	Internally Flawless	Very Slightly Included	Very Slightly Included	Slightly Included	Included
----------	---------------------	------------------------	------------------------	-------------------	----------

LABORATORY GROWN DIAMOND REPORT



December 5, 2025

IGI Report Number **LG750570561**

Description	LABORATORY GROWN DIAMOND
-------------	--------------------------

Shape and Cutting Style **ROUND BRILLIANT**

Measurements 9.30 - 9.38 X 5.74 MM

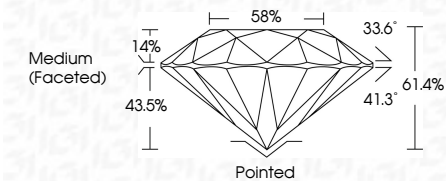
GRADING RESULTS

Carat Weight **3.07 CARATS**

Color Grade E

Clarity Grade VVS 2

Cut Grade **IDEAL**



ADDITIONAL GRADING INFORMATION

Polish **EXCELLENCE**Symmetry **EXCELLENCE**

Fluorescence NON

Inscription(s) LG75057056

Comments: This Laboratory Grown Diamond was created by Chemical Vapor Deposition (CVD) growth process.
Type IIa



IG



© IGI 2020, International Gemological Institute

FD - 10 20

www.igi.org

THIS DOCUMENT WAS PRODUCED WITH THE FOLLOWING SECURITY MEASURES: SPECIAL DOCUMENT PAPER, INK SCREENS, WATERMARK, BACKGROUND DESIGNS, HOLOGRAM AND OTHER SECURITY FEATURES NOT LISTED AND DO EXCEED DOCUMENT SECURITY INDUSTRY GUIDELINES

December 5, 2025
IGI Report No LG750570561
ROUND BRILLIANT

9.30 - 9.38 X 5.74 MM	
Carat Weight	3.07 CARATS
Color Grade	E
Clarity Grade	VS 2
Cut Grade	IDEAL
Depth	61.4%
Table	58%
Girdle	Medium (Faceted)

Culet	Pointed
Polish	EXCELLENT
Symmetry	EXCELLENT
Fluorescence	NONE
Inscriptions(s)	4881 G7F5N76A1

Comments:
This Laboratory Grown Diamond was created by Chemical Vapor Deposition (CVD) growth process.
Type IIa