



**ELECTRONIC COPY**

## LABORATORY GROWN DIAMOND REPORT

LG750569777  
Report verification at [igi.org](https://igi.org)

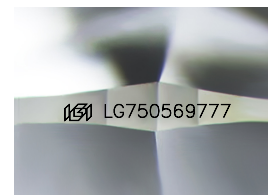
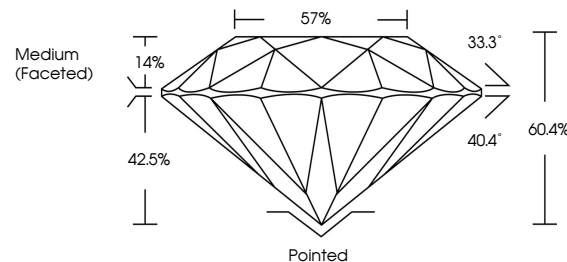
December 8, 2025	
IGI Report Number	LG750569777
Description	LABORATORY GROWN DIAMOND
Shape and Cutting Style	ROUND BRILLIANT
Measurements	8.23 - 8.34 X 4.99 MM
GRADING RESULTS	
Carat Weight	2.09 CARATS
Color Grade	E
Clarity Grade	VVS 2
Cut Grade	IDEAL

### ADDITIONAL GRADING INFORMATION

Polish	EXCELLENT
Symmetry	EXCELLENT
Fluorescence	NONE
Inscription(s)	15 LG750569777

Comments: This Laboratory Grown Diamond was created by Chemical Vapor Deposition (CVD) growth process.  
Type IIa

## PROPORTIONS



Sample Image Used

## COLOR

D E F G H I J Faint Very Light Light

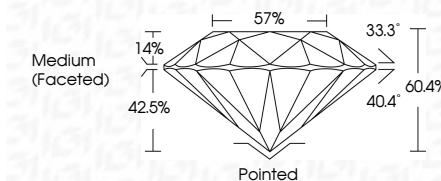
## CLARITY

FL	IF	VVS <sup>1-2</sup>	VS <sup>1-2</sup>	SI <sup>1-2</sup>	I <sup>1-3</sup>
Flawless	Internally Flawless	Very Very Slightly Included	Very Slightly Included	Slightly Included	Included

## LABORATORY GROWN DIAMOND REPORT



December 8, 2025	
IGI Report Number	LG750569777
Description	LABORATORY GROWN DIAMOND
Shape and Cutting Style	ROUND BRILLIANT
Measurements	8.23 - 8.34 X 4.99 MM
GRADING RESULTS	
Carat Weight	2.09 CARATS
Color Grade	E
Clarity Grade	VVS 2
Cut Grade	IDEAL



### ADDITIONAL GRADING INFORMATION

Polish	EXCELLENT
Symmetry	EXCELLENT
Fluorescence	NONE
Inscription(s)	 LG750569777
<p>Comments: This Laboratory Grown Diamond was created by Chemical Vapor Deposition (CVD) growth process.</p> <p>Type IIa</p>	



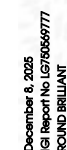
© IGI 2020, International Gemological Institute

FD - 10 20



THIS DOCUMENT WAS PRODUCED WITH THE FOLLOWING SECURITY MEASURES: SPECIAL DOCUMENT PAPER, INK SCREENS, WATERMARK, BACKGROUND DESIGNS, HOLOGRAM AND OTHER SECURITY FEATURES NOT LISTED AND DO EXCEED DOCUMENT SECURITY INDUSTRY GUIDELINES

**www.igi.org**



<b>Report No. LG753569777</b> <b>ROUND BRILLIANT</b>		<b>2.09 CARATS</b> <b>E</b>		<b>VVS 2</b> <b>IDEAL</b> <b>60.4%</b> <b>57%</b> <b>Medium (Faceted)</b>		<b>Polished</b> <b>EXCELLENT</b> <b>EXCELLENT</b> <b>NONE</b>	
<b>32.23 - 6.34 X 4.99 MM</b> <b>Color Weight</b>		<b>Color Grade</b> <b>Clarity Grade</b> <b>Cut Grade</b> <b>Depth</b> <b>Table</b> <b>Girdle</b>		<b>Culet</b> <b>Polish</b> <b>Symmetry</b> <b>Fluorescence</b>			

**Comments:**  
This Laboratory Grown Diamond was created by Chemical Vapor Deposition (CVD) growth process.