



**ELECTRONIC COPY**

LG750569583  
Report verification at igi.org



December 8, 2025

IGI Report Number **LG750569583**

Description **LABORATORY GROWN DIAMOND**

Shape and Cutting Style **SQUARE EMERALD CUT**

Measurements **6.66 X 6.65 X 4.21 MM**

**GRADING RESULTS**

Carat Weight **1.80 CARAT**

Color Grade **E**

Clarity Grade **VVS 1**

December 8, 2025  
IGI Report Number **LG750569583**  
Description **LABORATORY GROWN DIAMOND**  
Shape and Cutting Style **SQUARE EMERALD CUT**  
Measurements **6.66 X 6.65 X 4.21 MM**

**GRADING RESULTS**

Carat Weight **1.80 CARAT**

Color Grade **E**

Clarity Grade **VVS 1**

**ADDITIONAL GRADING INFORMATION**

Polish **EXCELLENT**

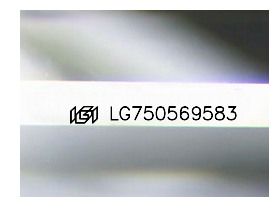
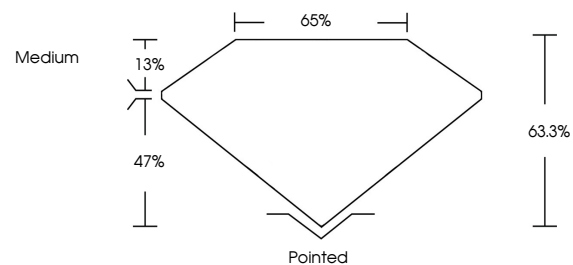
Symmetry **EXCELLENT**

Fluorescence **NONE**

Inscription(s) **IGI LG750569583**

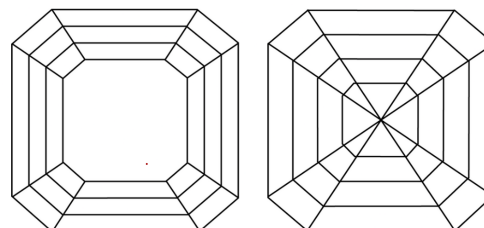
Comments: This Laboratory Grown Diamond was created by Chemical Vapor Deposition (CVD) growth process.  
Type IIa

**PROPORTIONS**



Sample Image Used

**CLARITY CHARACTERISTICS**



**KEY TO SYMBOLS**

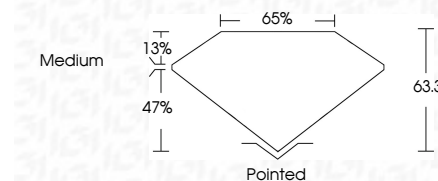
Red symbols indicate internal characteristics.  
Green symbols indicate external characteristics.

**COLOR**

D E F G H I J Faint Very Light Light

**CLARITY**

FL	IF	VVS <sup>1-2</sup>	VS <sup>1-2</sup>	SI <sup>1-2</sup>	I <sup>1-3</sup>
Flawless	Internally Flawless	Very Very Slightly Included	Very Slightly Included	Slightly Included	Included



**ADDITIONAL GRADING INFORMATION**

Polish **EXCELLENT**

Symmetry **EXCELLENT**

Fluorescence **NONE**

Inscription(s) **IGI LG750569583**

Comments: This Laboratory Grown Diamond was created by Chemical Vapor Deposition (CVD) growth process.  
Type IIa



**IGI**



December 8, 2025	1.80 CARAT	E	VVS 1	63.3%	65%	Medium	Pointed
IGI Report No LG750569583	SQUARE EMERALD CUT						EXCELLENT
6.66 X 6.65 X 4.21 MM	Color Grade						EXCELLENT
	Clarity Grade						NONE
	Depth						EXCELLENT
	Table						NONE
	Girdle						EXCELLENT
	Culet						NONE
	Polish						EXCELLENT
	Symmetry						EXCELLENT
	Fluorescence						NONE
	Inscription(s)						IGI LG750569583

Comments: This Laboratory Grown Diamond was created by Chemical Vapor Deposition (CVD) growth process.  
Type IIa