



**ELECTRONIC COPY**

## LABORATORY GROWN DIAMOND REPORT

LG750569229  
Report verification at [igi.org](https://igi.org)

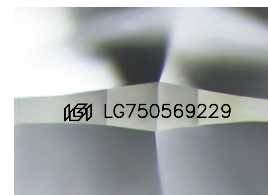
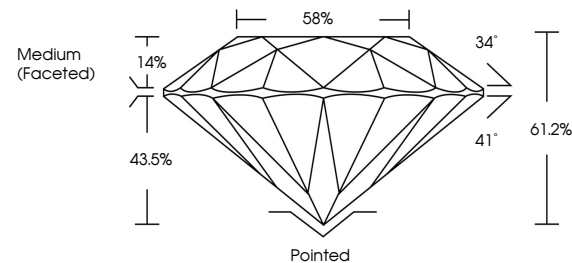
|                         |                          |
|-------------------------|--------------------------|
| December 8, 2025        |                          |
| IGI Report Number       | LG750569229              |
| Description             | LABORATORY GROWN DIAMOND |
| Shape and Cutting Style | ROUND BRILLIANT          |
| Measurements            | 8.78 - 8.82 X 5.39 MM    |
| GRADING RESULTS         |                          |
| Carat Weight            | 2.55 CARATS              |
| Color Grade             | D                        |
| Clarity Grade           | VVS 1                    |
| Cut Grade               | IDEAL                    |

### ADDITIONAL GRADING INFORMATION

|                |   |
|----------------|---|
| Polish         | EXCELLENT   |
| Symmetry       | EXCELLENT   |
| Fluorescence   | NONE  |
| Inscription(s) |  LG750569229 |

Comments: This Laboratory Grown Diamond was created by Chemical Vapor Deposition (CVD) growth process.  
Type IIa

## PROPORTIONS



Sample Image Used

**COLOR**

D E F G H I J Faint Very Light Light

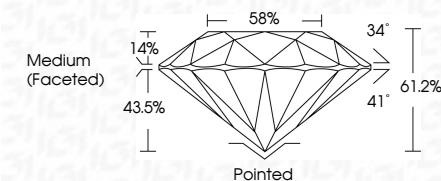
## CLARITY

| FL       | IF                  | VVS <sup>1-2</sup>          | VS <sup>1-2</sup>      | SI <sup>1-2</sup> | I <sup>1-3</sup> |
|----------|---------------------|-----------------------------|------------------------|-------------------|------------------|
| Flawless | Internally Flawless | Very Very Slightly Included | Very Slightly Included | Slightly Included | Included         |

## LABORATORY GROWN DIAMOND REPORT



|                         |                          |
|-------------------------|--------------------------|
| December 8, 2025        |                          |
| IGI Report Number       | LG750569229              |
| Description             | LABORATORY GROWN DIAMOND |
| Shape and Cutting Style | ROUND BRILLIANT          |
| Measurements            | 8.78 - 8.82 X 5.39 MM    |
| GRADING RESULTS         |                          |
| Carat Weight            | 2.55 CARATS              |
| Color Grade             | D                        |
| Clarity Grade           | VVS 1                    |
| Cut Grade               | IDEAL                    |



### ADDITIONAL GRADING INFORMATION

|   |   |
|---|---|
| Polish  | EXCELLENT   |
| Symmetry  | EXCELLENT   |
| Fluorescence  | NONE  |
| Inscription(s)  |  LG750569229 |
| <p>Comments: This Laboratory Grown Diamond was created by Chemical Vapor Deposition (CVD) growth process.</p> <p>Type IIa</p> |   |



© IGI 2020, International Gemological Institute

FD - 10 20



THIS DOCUMENT WAS PRODUCED WITH THE FOLLOWING SECURITY MEASURES: SPECIAL DOCUMENT PAPER, INK SCREENS, WATERMARK, BACKGROUND DESIGNS, HOLOGRAM AND OTHER SECURITY FEATURES NOT LISTED AND DO EXCEED DOCUMENT SECURITY INDUSTRY GUIDELINES

**www.igi.org**

December 8, 2025  
IGI Report No LG750569229  
ROUND BRILLIANT

8.78 - 8.82 X 5.39 MM

8.78 - 8.82 X 5.39 MM  
Carat Weight  
2.55 CARATS

**Color Grade**

**D**

| Clarity Grade | WS 1  |
|---------------|-------|
| Out Grade     | IDEAL |

|           |       |
|-----------|-------|
| Cut Grade | IDEAL |
| Depth     | 61.2% |

|            |       |
|------------|-------|
| Depression | 01.2% |
| Table      | 56%   |

Girdle

|     | Culet | Pointed |
|-----|-------|---------|
| 1   |       |         |
| 2   |       |         |
| 3   |       |         |
| 4   |       |         |
| 5   |       |         |
| 6   |       |         |
| 7   |       |         |
| 8   |       |         |
| 9   |       |         |
| 10  |       |         |
| 11  |       |         |
| 12  |       |         |
| 13  |       |         |
| 14  |       |         |
| 15  |       |         |
| 16  |       |         |
| 17  |       |         |
| 18  |       |         |
| 19  |       |         |
| 20  |       |         |
| 21  |       |         |
| 22  |       |         |
| 23  |       |         |
| 24  |       |         |
| 25  |       |         |
| 26  |       |         |
| 27  |       |         |
| 28  |       |         |
| 29  |       |         |
| 30  |       |         |
| 31  |       |         |
| 32  |       |         |
| 33  |       |         |
| 34  |       |         |
| 35  |       |         |
| 36  |       |         |
| 37  |       |         |
| 38  |       |         |
| 39  |       |         |
| 40  |       |         |
| 41  |       |         |
| 42  |       |         |
| 43  |       |         |
| 44  |       |         |
| 45  |       |         |
| 46  |       |         |
| 47  |       |         |
| 48  |       |         |
| 49  |       |         |
| 50  |       |         |
| 51  |       |         |
| 52  |       |         |
| 53  |       |         |
| 54  |       |         |
| 55  |       |         |
| 56  |       |         |
| 57  |       |         |
| 58  |       |         |
| 59  |       |         |
| 60  |       |         |
| 61  |       |         |
| 62  |       |         |
| 63  |       |         |
| 64  |       |         |
| 65  |       |         |
| 66  |       |         |
| 67  |       |         |
| 68  |       |         |
| 69  |       |         |
| 70  |       |         |
| 71  |       |         |
| 72  |       |         |
| 73  |       |         |
| 74  |       |         |
| 75  |       |         |
| 76  |       |         |
| 77  |       |         |
| 78  |       |         |
| 79  |       |         |
| 80  |       |         |
| 81  |       |         |
| 82  |       |         |
| 83  |       |         |
| 84  |       |         |
| 85  |       |         |
| 86  |       |         |
| 87  |       |         |
| 88  |       |         |
| 89  |       |         |
| 90  |       |         |
| 91  |       |         |
| 92  |       |         |
| 93  |       |         |
| 94  |       |         |
| 95  |       |         |
| 96  |       |         |
| 97  |       |         |
| 98  |       |         |
| 99  |       |         |
| 100 |       |         |

|        |           |
|--------|-----------|
| Culter | Pointed   |
| Polish | EXCELLENT |

|              |           |
|--------------|-----------|
| Symmetry     | EXCELLENT |
| Fluorescence | NONE      |

|                |             |
|----------------|-------------|
| Fluorescence   | NONE        |
| Inscription(s) | LG750569229 |

Comments:

**Comments:**  
This Laboratory Grown Diamond was created by Chemical Vapor Deposition

created by Chemical Vapor Deposition (CVD) growth process.  
Type IIa

Type IIa