



ELECTRONIC COPY

LG750569056
Report verification at igi.org



December 8, 2025
IGI Report Number **LG750569056**
Description **LABORATORY GROWN DIAMOND**
Shape and Cutting Style **ROUND BRILLIANT**
Measurements **12.12 - 12.18 X 7.25 MM**
GRADING RESULTS
Carat Weight **6.53 CARATS**
Color Grade **FANCY YELLOW**
Clarity Grade **VS 1**
Cut Grade **EXCELLENT**

December 8, 2025
IGI Report Number **LG750569056**
Description **LABORATORY GROWN DIAMOND**
Shape and Cutting Style **ROUND BRILLIANT**
Measurements **12.12 - 12.18 X 7.25 MM**

GRADING RESULTS

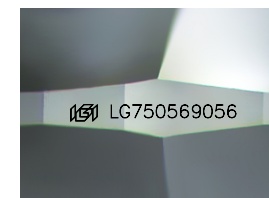
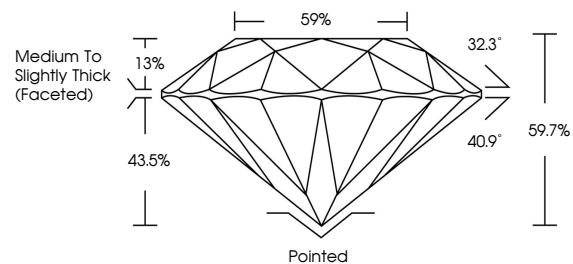
Carat Weight **6.53 CARATS**
Color Grade **FANCY YELLOW**
Clarity Grade **VS 1**
Cut Grade **EXCELLENT**

ADDITIONAL GRADING INFORMATION

Polish **EXCELLENT**
Symmetry **EXCELLENT**
Fluorescence **VERY SLIGHT**
Inscription(s) **LG750569056**

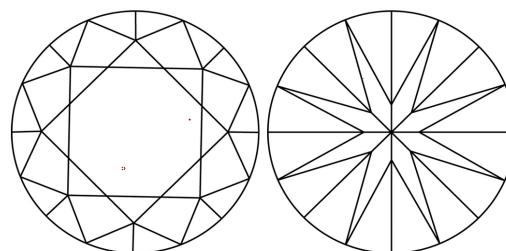
Comments: This Laboratory Grown Diamond was created by Chemical Vapor Deposition (CVD) growth process.
Indications of post-growth treatment.

PROPORTIONS



Sample Image Used

CLARITY CHARACTERISTICS



KEY TO SYMBOLS

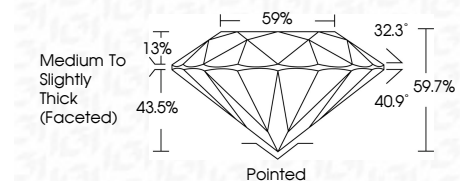
Red symbols indicate internal characteristics.
Green symbols indicate external characteristics.

COLOR

D E F G H I J Faint Very Light Light

CLARITY

FL	IF	VS ¹⁻²	VS ¹⁻²	SI ¹⁻²	I ¹⁻³
Flawless	Internally Flawless	Very Very Slightly Included	Very Slightly Included	Slightly Included	Included



ADDITIONAL GRADING INFORMATION

Polish **EXCELLENT**
Symmetry **EXCELLENT**
Fluorescence **VERY SLIGHT**
Inscription(s) **LG750569056**
Comments: This Laboratory Grown Diamond was created by Chemical Vapor Deposition (CVD) growth process.
Indications of post-growth treatment.



December 8, 2025
IGI Report No **LG750569056**
ROUND BRILLIANT
12.12 - 12.18 X 7.25 MM
Carat Weight **6.53 CARATS**
Color Grade **FANCY YELLOW**
Clarity Grade **VS 1**
Cut Grade **EXCELLENT**
Depth **59.7%**
Table **59%**
Girdle **Medium To Slightly Thick (Faceted)**
Culet **Pointed**
Polish **EXCELLENT**
Symmetry **EXCELLENT**
Fluorescence **VERY SLIGHT**
Inscription(s) **LG750569056**
Comments: This Laboratory Grown Diamond was created by Chemical Vapor Deposition (CVD) growth process.
Indications of post-growth treatment.