



ELECTRONIC COPY

LABORATORY GROWN DIAMOND REPORT

LG750568954
Report verification at igi.org

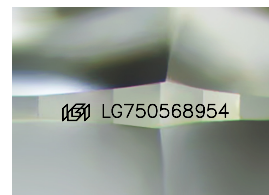
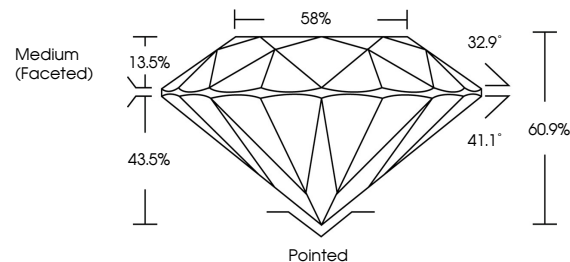
December 8, 2025	
IGI Report Number	LG750568954
Description	LABORATORY GROWN DIAMOND
Shape and Cutting Style	ROUND BRILLIANT
Measurements	8.97 - 9.01 X 5.48 MM
GRADING RESULTS	
Carat Weight	2.70 CARATS
Color Grade	E
Clarity Grade	VVS 2
Cut Grade	IDEAL

ADDITIONAL GRADING INFORMATION

Polish	EXCELLENT
Symmetry	EXCELLENT
Fluorescence	NONE
Inscription(s)	15 LG750568954

Comments: This Laboratory Grown Diamond was created by Chemical Vapor Deposition (CVD) growth process.
Type IIa

PROPORTIONS



Sample Image Used

COLOR

D E F G H I J Faint Very Light Light

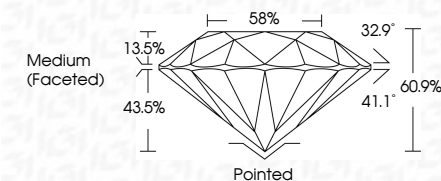
CLARITY

FL	IF	VVS ¹⁻²	VS ¹⁻²	SI ¹⁻²	I ¹⁻³
Flawless	Internally Flawless	Very Very Slightly Included	Very Slightly Included	Slightly Included	Included

LABORATORY GROWN DIAMOND REPORT



December 8, 2025	
IGI Report Number	LG750568954
Description	LABORATORY GROWN DIAMOND
Shape and Cutting Style	ROUND BRILLIANT
Measurements	8.97 - 9.01 X 5.48 MM
GRADING RESULTS	
Carat Weight	2.70 CARATS
Color Grade	E
Clarity Grade	VVS 2
Cut Grade	IDEAL



ADDITIONAL GRADING INFORMATION

Polish	EXCELLENT
Symmetry	EXCELLENT
Fluorescence	NONE
Inscription(s)	 LG750568954
Comments: This Laboratory Grown Diamond was created by Chemical Vapor Deposition (CVD) growth process.	
Type IIa	



© IGI 2020, International Gemological Institute

FD - 10 20



THIS DOCUMENT WAS PRODUCED WITH THE FOLLOWING SECURITY MEASURES: SPECIAL DOCUMENT PAPER, INK SCREENS, WATERMARK, BACKGROUND DESIGNS, HOLOGRAM AND OTHER SECURITY FEATURES NOT LISTED AND DO EXCEED DOCUMENT SECURITY INDUSTRY GUIDELINES

www.igi.org

December 8, 2025
GI Report No LG750568954
ROUND BRILLIANT

ROUND BRILLIANT
3.97 - 9.01 X 5.48 MM

3.97 - 9.01 X 6.48 MM
Carat Weight
2.70 CARATS

Color Grade E

Clarity Grade	WS 2
Out Grade	IDEAL

Cut Grade	IDEAL
Depth	60.9%

Dep III	60.9%
Table	58%

Girdle

	Culet	Pointed
1	0.0000	0.0000
2	0.0000	0.0000
3	0.0000	0.0000
4	0.0000	0.0000
5	0.0000	0.0000
6	0.0000	0.0000
7	0.0000	0.0000
8	0.0000	0.0000
9	0.0000	0.0000
10	0.0000	0.0000
11	0.0000	0.0000
12	0.0000	0.0000
13	0.0000	0.0000
14	0.0000	0.0000
15	0.0000	0.0000
16	0.0000	0.0000
17	0.0000	0.0000
18	0.0000	0.0000
19	0.0000	0.0000
20	0.0000	0.0000
21	0.0000	0.0000
22	0.0000	0.0000
23	0.0000	0.0000
24	0.0000	0.0000
25	0.0000	0.0000
26	0.0000	0.0000
27	0.0000	0.0000
28	0.0000	0.0000
29	0.0000	0.0000
30	0.0000	0.0000
31	0.0000	0.0000
32	0.0000	0.0000
33	0.0000	0.0000
34	0.0000	0.0000
35	0.0000	0.0000
36	0.0000	0.0000
37	0.0000	0.0000
38	0.0000	0.0000
39	0.0000	0.0000
40	0.0000	0.0000
41	0.0000	0.0000
42	0.0000	0.0000
43	0.0000	0.0000
44	0.0000	0.0000
45	0.0000	0.0000
46	0.0000	0.0000
47	0.0000	0.0000
48	0.0000	0.0000
49	0.0000	0.0000
50	0.0000	0.0000
51	0.0000	0.0000
52	0.0000	0.0000
53	0.0000	0.0000
54	0.0000	0.0000
55	0.0000	0.0000
56	0.0000	0.0000
57	0.0000	0.0000
58	0.0000	0.0000
59	0.0000	0.0000
60	0.0000	0.0000
61	0.0000	0.0000
62	0.0000	0.0000
63	0.0000	0.0000
64	0.0000	0.0000
65	0.0000	0.0000
66	0.0000	0.0000
67	0.0000	0.0000
68	0.0000	0.0000
69	0.0000	0.0000
70	0.0000	0.0000
71	0.0000	0.0000
72	0.0000	0.0000
73	0.0000	0.0000
74	0.0000	0.0000
75	0.0000	0.0000
76	0.0000	0.0000
77	0.0000	0.0000
78	0.0000	0.0000
79	0.0000	0.0000
80	0.0000	0.0000
81	0.0000	0.0000
82	0.0000	0.0000
83	0.0000	0.0000
84	0.0000	0.0000
85	0.0000	0.0000
86	0.0000	0.0000
87	0.0000	0.0000
88	0.0000	0.0000
89	0.0000	0.0000
90	0.0000	0.0000
91	0.0000	0.0000
92	0.0000	0.0000
93	0.0000	0.0000
94	0.0000	0.0000
95	0.0000	0.0000
96	0.0000	0.0000
97	0.0000	0.0000
98	0.0000	0.0000
99	0.0000	0.0000
100	0.0000	0.0000

Quiet	Pointed
Polish	EXCELLENT

Symmetry	EXCELLENT
Fluorescence	NONE

Fluorescence	NONE
Inscription(s)	(S) LG750568954

Comments:

Comments:
This Laboratory Grown Diamond was
created by Chemical Vapor Deposition

created by Chemical Vapor Deposition (CVD) growth process.

Type IIa