



ELECTRONIC COPY

LG750566847
Report verification at igi.org



December 4, 2025

IGI Report Number **LG750566847**

Description **LABORATORY GROWN DIAMOND**

Shape and Cutting Style **ROUND BRILLIANT**

Measurements **8.25 - 8.28 X 4.92 MM**

GRADING RESULTS

Carat Weight **2.03 CARATS**

Color Grade **FANCY VIVID GREEN**

Clarity Grade **VVS 2**

Cut Grade **IDEAL**

December 4, 2025
IGI Report Number **LG750566847**
Description **LABORATORY GROWN DIAMOND**
Shape and Cutting Style **ROUND BRILLIANT**
Measurements **8.25 - 8.28 X 4.92 MM**

GRADING RESULTS

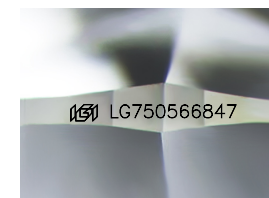
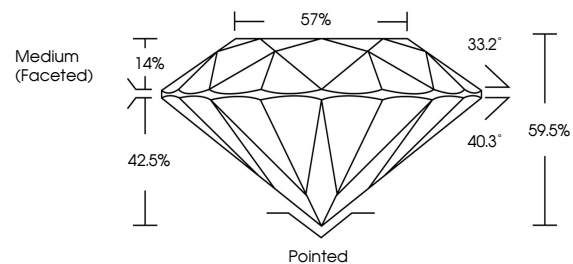
Carat Weight **2.03 CARATS**
Color Grade **FANCY VIVID GREEN**
Clarity Grade **VVS 2**
Cut Grade **IDEAL**

ADDITIONAL GRADING INFORMATION

Polish **VERY GOOD**
Symmetry **VERY GOOD**
Fluorescence **NONE**
Inscription(s) **IGI LG750566847**

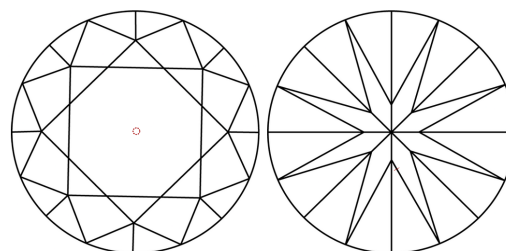
Comments: This Laboratory Grown Diamond was created by High Pressure High Temperature (HPHT) growth process.
Indications of post-growth treatment.

PROPORTIONS



Sample Image Used

CLARITY CHARACTERISTICS



KEY TO SYMBOLS

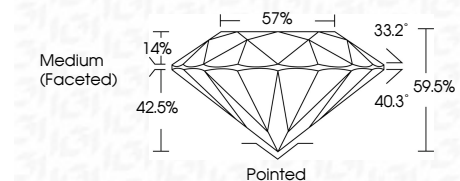
Red symbols indicate internal characteristics.
Green symbols indicate external characteristics.

COLOR

D E F G H I J Faint Very Light Light

CLARITY

FL	IF	VVS ¹⁻²	VS ¹⁻²	SI ¹⁻²	I ¹⁻³
Flawless	Internally Flawless	Very Very Slightly Included	Very Slightly Included	Slightly Included	Included



ADDITIONAL GRADING INFORMATION

Polish **VERY GOOD**
Symmetry **VERY GOOD**
Fluorescence **NONE**
Inscription(s) **IGI LG750566847**
Comments: This Laboratory Grown Diamond was created by High Pressure High Temperature (HPHT) growth process.
Indications of post-growth treatment.



December 4, 2025
IGI Report No LG750566847
ROUND BRILLIANT
8.25 - 8.28 X 4.92 MM
2.03 CARATS
FANCY VIVID GREEN
VVS 2
IDEAL
59.5%
57%
Medium (Faceted)Pointed
VERY GOOD
VERY GOOD
VERY GOOD
NONE
IGI LG750566847

Cutler
Polish
Symmetry
Fluorescence
Inscription(s)

Comments: This Laboratory Grown Diamond was created by High Pressure High Temperature (HPHT) growth process.
Indications of post-growth treatment.