



ELECTRONIC COPY

LABORATORY GROWN DIAMOND REPORT

December 3, 2025	
IGI Report Number	LG750566088
Description	LABORATORY GROWN DIAMOND
Shape and Cutting Style	HEXAGONAL STEP CUT
Measurements	11.65 X 5.66 X 3.93 MM

GRADING RESULTS

Carat Weight	2.12 CARATS
Color Grade	E
Clarity Grade	VVS 2

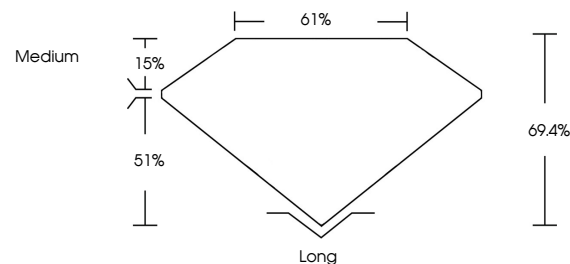
ADDITIONAL GRADING INFORMATION

Polish	EXCELLENT
Symmetry	EXCELLENT
Fluorescence	NONE
Inscription(s)	 LG750566088

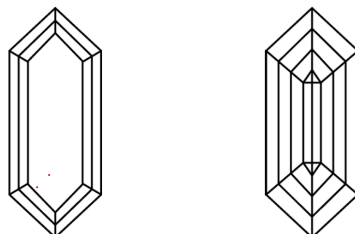
Comments: This Laboratory Grown Diamond was created by Chemical Vapor Deposition (CVD) growth process.
Type IIa

LG750566088
Report verification at igi.org

PROPORTIONS

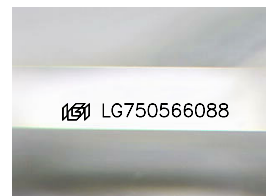


CLARITY CHARACTERISTICS



KEY TO SYMBOLS

Red symbols indicate internal characteristics.
Green symbols indicate external characteristics.



Sample Image Used

COLOR

D E F G H I J Faint Very Light Light

CLARITY

FL	IF	VVS ¹⁻²	VS ¹⁻²	SI ¹⁻²	I ¹⁻³
Flawless	Internally Flawless	Very Very Slightly Included	Very Slightly Included	Slightly Included	Included

LABORATORY GROWN DIAMOND REPORT



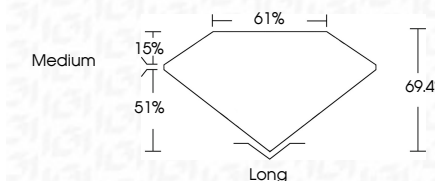
December 3, 2025	
IGI Report Number	LG750566088
Description	LABORATORY GROWN DIAMOND
Shape and Cutting Style	HEXAGONAL STEP CUT
Measurements	11.65 X 5.66 X 3.93 MM

GRADING RESULTS

Carat Weight	2.12 CARATS
Color Grade	E
Clarity Grade	VVS 2

ADDITIONAL GRADING INFORMATION

Polish	EXCELLENT
Symmetry	EXCELLENT
Fluorescence	NONE
Inscription(s)	 151 LG750566088
Comments: This Laboratory Grown Diamond was created by Chemical Vapor Deposition (CVD) growth process.	
Type IIa	



© IGI 2020, International Gemological Institute

FD - 10 20



THIS DOCUMENT WAS PRODUCED WITH THE FOLLOWING SECURITY MEASURES: SPECIAL DOCUMENT PAPER, INK SCREENS, WATERMARK, BACKGROUND DESIGNS, HOLOGRAM AND OTHER SECURITY FEATURES NOT LISTED AND DO EXCEED DOCUMENT SECURITY INDUSTRY GUIDELINES

December 3, 2025
 IGI Report No LG750566088
 HEXAGONAL STEP CUT

11.65 X 5.65 X 3.93 MM	212 CARATS	
Carat Weight	E	
Color Grade		
Clarity Grade	VS 2	Long
Depth	69.4%	EXCELLENT
Table	61%	EXCELLENT
Girdle	Medium	NONE
		sym / c / r / f / s / o / a

Comments:
This Laboratory Grown Diamond was created by Chemical Vapor Deposition (CVD) growth process.

www.igi.org