



**ELECTRONIC COPY**

LG750565374  
Report verification at igi.org



December 5, 2025  
IGI Report Number **LG750565374**  
Description **LABORATORY GROWN DIAMOND**  
Shape and Cutting Style **OVAL MODIFIED BRILLIANT**  
Measurements **13.70 X 9.89 X 6.61 MM**  
**GRADING RESULTS**  
Carat Weight **7.00 CARATS**  
Color Grade **FANCY VIVID YELLOW**  
Clarity Grade **VS 1**

December 5, 2025  
IGI Report Number **LG750565374**  
Description **LABORATORY GROWN DIAMOND**  
Shape and Cutting Style **OVAL MODIFIED BRILLIANT**  
Measurements **13.70 X 9.89 X 6.61 MM**

**GRADING RESULTS**

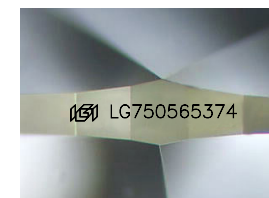
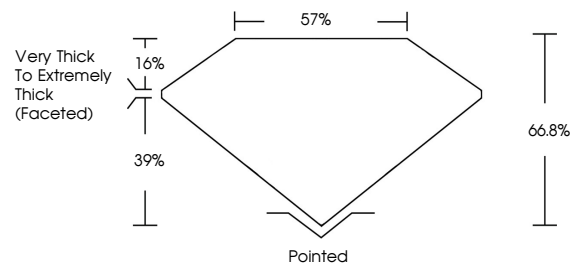
Carat Weight **7.00 CARATS**  
Color Grade **FANCY VIVID YELLOW**  
Clarity Grade **VS 1**

**ADDITIONAL GRADING INFORMATION**

Polish **EXCELLENT**  
Symmetry **EXCELLENT**  
Fluorescence **NONE**  
Inscription(s) **IGI LG750565374**

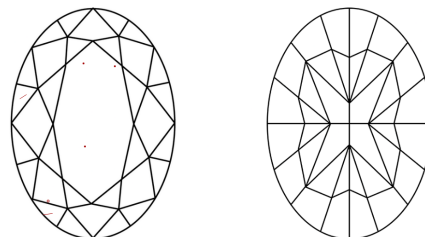
Comments: This Laboratory Grown Diamond was created by Chemical Vapor Deposition (CVD) growth process.

**PROPORTIONS**



Sample Image Used

**CLARITY CHARACTERISTICS**



**KEY TO SYMBOLS**

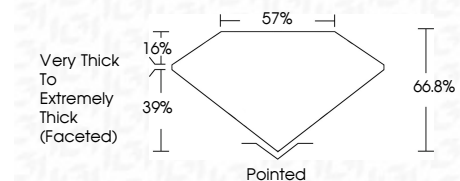
Red symbols indicate internal characteristics.  
Green symbols indicate external characteristics.

**COLOR**

D E F G H I J Faint Very Light Light

**CLARITY**

FL	IF	VS <sup>1-2</sup>	VS <sup>1-2</sup>	SI <sup>1-2</sup>	I <sup>1-3</sup>
Flawless	Internally Flawless	Very Very Slightly Included	Very Slightly Included	Slightly Included	Included



**ADDITIONAL GRADING INFORMATION**

Polish **EXCELLENT**  
Symmetry **EXCELLENT**  
Fluorescence **NONE**  
Inscription(s) **IGI LG750565374**  
Comments: This Laboratory Grown Diamond was created by Chemical Vapor Deposition (CVD) growth process.



December 5, 2025  
IGI Report No LG750565374  
OVAL MODIFIED BRILLIANT  
13.70 X 9.89 X 6.61 MM  
7.00 CARATS  
FANCY VIVID YELLOW  
VS 1  
66.8%  
39%  
Very Thick to Extremely Thick (Faceted)  
Pointed  
EXCELLENT  
EXCELLENT  
NONE  
IGI LG750565374  
Comments: This Laboratory Grown Diamond was created by Chemical Vapor Deposition (CVD) growth process.