



ELECTRONIC COPY

LG750564510
Report verification at igi.org



November 25, 2025

IGI Report Number **LG750564510**

Description **LABORATORY GROWN DIAMOND**

Shape and Cutting Style **EMERALD CUT**

Measurements **9.63 X 6.89 X 4.74 MM**

GRADING RESULTS

Carat Weight **3.09 CARATS**

Color Grade **E**

Clarity Grade **VS 1**

LABORATORY GROWN DIAMOND REPORT

November 25, 2025

IGI Report Number **LG750564510**

Description **LABORATORY GROWN DIAMOND**

Shape and Cutting Style **EMERALD CUT**

Measurements **9.63 X 6.89 X 4.74 MM**

GRADING RESULTS

Carat Weight **3.09 CARATS**

Color Grade **E**

Clarity Grade **VS 1**

ADDITIONAL GRADING INFORMATION

Polish **EXCELLENT**

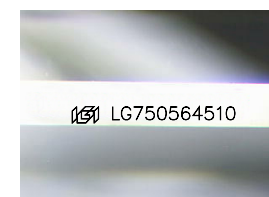
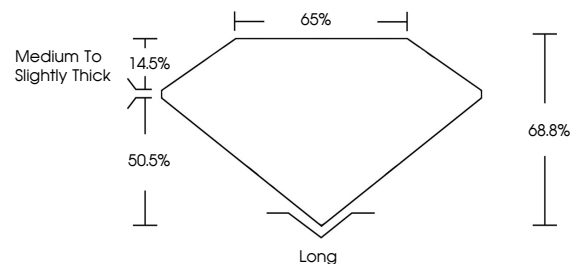
Symmetry **EXCELLENT**

Fluorescence **NONE**

Inscription(s) **IGI LG750564510**

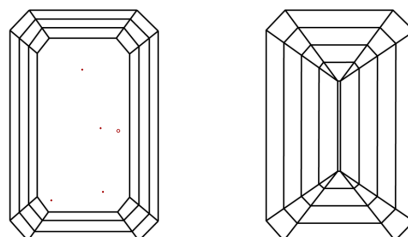
Comments: This Laboratory Grown Diamond was created by Chemical Vapor Deposition (CVD) growth process. Type IIa

PROPORTIONS



Sample Image Used

CLARITY CHARACTERISTICS



KEY TO SYMBOLS

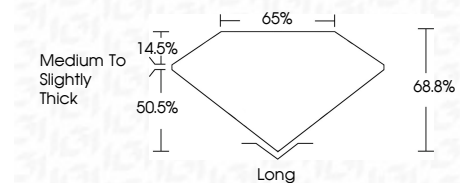
Red symbols indicate internal characteristics.
Green symbols indicate external characteristics.

COLOR

D E F G H I J Faint Very Light Light

CLARITY

FL	IF	VS ¹⁻²	VS ¹⁻²	SI ¹⁻²	I ¹⁻³
Flawless	Internally Flawless	Very Very Slightly Included	Very Slightly Included	Slightly Included	Included



ADDITIONAL GRADING INFORMATION

Polish **EXCELLENT**

Symmetry **EXCELLENT**

Fluorescence **NONE**

Inscription(s) **IGI LG750564510**

Comments: This Laboratory Grown Diamond was created by Chemical Vapor Deposition (CVD) growth process. Type IIa



IGI



November 25, 2025
IGI Report No LG750564510
EMERALD CUT

3.09 CARATS
E

9.63 X 6.89 X 4.74 MM
Color Grade
Clarity Grade
Table
Girdle
Medium to Slightly Thick

68.8%
50.5%

Long
EXCELLENT
EXCELLENT
NONE
IGI LG750564510

Comments: This Laboratory Grown Diamond was created by Chemical Vapor Deposition (CVD) growth process. Type IIa