



ELECTRONIC COPY

LG750563868
Report verification at igi.org



December 2, 2025

IGI Report Number **LG750563868**

Description **LABORATORY GROWN DIAMOND**

Shape and Cutting Style **SQUARE EMERALD CUT**

Measurements **8.98 X 8.76 X 5.62 MM**

GRADING RESULTS

Carat Weight **4.37 CARATS**

Color Grade **E**

Clarity Grade **VVS 2**

December 2, 2025

IGI Report Number **LG750563868**

Description **LABORATORY GROWN DIAMOND**

Shape and Cutting Style **SQUARE EMERALD CUT**

Measurements **8.98 X 8.76 X 5.62 MM**

GRADING RESULTS

Carat Weight **4.37 CARATS**

Color Grade **E**

Clarity Grade **VVS 2**

ADDITIONAL GRADING INFORMATION

Polish **EXCELLENT**

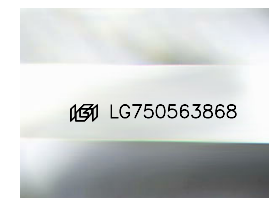
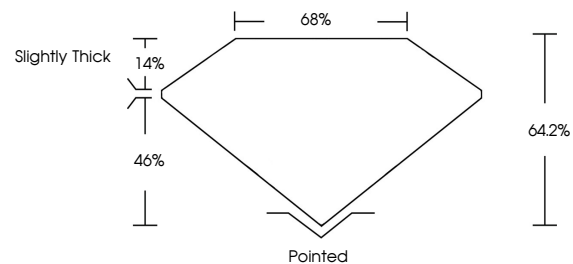
Symmetry **EXCELLENT**

Fluorescence **NONE**

Inscription(s) **IGI LG750563868**

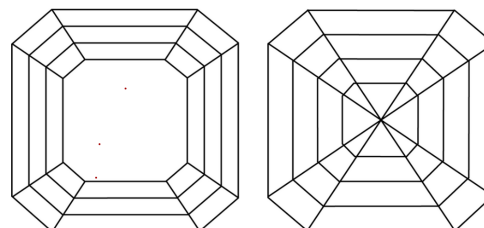
Comments: This Laboratory Grown Diamond was created by Chemical Vapor Deposition (CVD) growth process. Type IIa

PROPORTIONS



Sample Image Used

CLARITY CHARACTERISTICS



KEY TO SYMBOLS

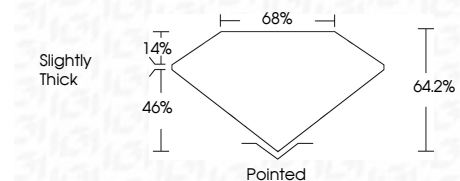
Red symbols indicate internal characteristics.
Green symbols indicate external characteristics.

COLOR

D E F G H I J Faint Very Light Light

CLARITY

FL	IF	VVS ¹⁻²	VS ¹⁻²	SI ¹⁻²	I ¹⁻³
Flawless	Internally Flawless	Very Very Slightly Included	Very Slightly Included	Slightly Included	Included



ADDITIONAL GRADING INFORMATION

Polish **EXCELLENT**

Symmetry **EXCELLENT**

Fluorescence **NONE**

Inscription(s) **IGI LG750563868**

Comments: This Laboratory Grown Diamond was created by Chemical Vapor Deposition (CVD) growth process. Type IIa



IGI



December 2, 2025	IGI Report No LG750563868	4.37 CARATS	E
SQUARE EMERALD CUT	8.98 X 8.76 X 5.62 MM	VVS 2	64.2%
Carat Weight	Color Grade	Depth	Table
8.98	E	46%	68%
Clarity Grade	Slightly Thick	Culet	Pointed
VVS 2	None	None	None
Symmetry	Fluorescence	Inscription(s)	IGI LG750563868
EXCELLENT	NONE		
EXCELLENT			

Comments: This Laboratory Grown Diamond was created by Chemical Vapor Deposition (CVD) growth process. Type IIa