



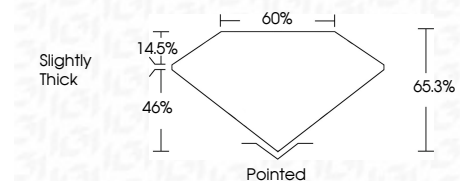
ELECTRONIC COPY

LG750563735 Report verification at igi.org



December 2, 2025 IGI Report Number LG750563735 Description LABORATORY GROWN DIAMOND Shape and Cutting Style CUT CORNERED SQUARE MODIFIED BRILLIANT Measurements 6.64 X 6.46 X 4.22 MM

GRADING RESULTS Carat Weight 1.71 CARAT Color Grade E Clarity Grade VVS 2



ADDITIONAL GRADING INFORMATION Polish EXCELLENT Symmetry EXCELLENT Fluorescence NONE Inscription(s) IGI LG750563735 Comments: This Laboratory Grown Diamond was created by Chemical Vapor Deposition (CVD) growth process. Type IIa



December 2, 2025 IGI Report No LG750563735 CUT CORNERED SQUARE MODIFIED BRILLIANT 6.64 X 6.46 X 4.22 MM 1.71 CARAT E VVS 2 65.3% 46% Slightly Thick Pointed EXCELLENT EXCELLENT NONE IGI LG750563735 Comments: This Laboratory Grown Diamond was created by Chemical Vapor Deposition (CVD) growth process. Type IIa

LABORATORY GROWN DIAMOND REPORT

December 2, 2025 IGI Report Number LG750563735 Description LABORATORY GROWN DIAMOND Shape and Cutting Style CUT CORNERED SQUARE MODIFIED BRILLIANT Measurements 6.64 X 6.46 X 4.22 MM

GRADING RESULTS

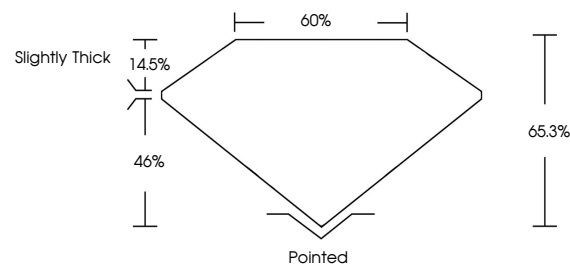
Carat Weight 1.71 CARAT Color Grade E Clarity Grade VVS 2

ADDITIONAL GRADING INFORMATION

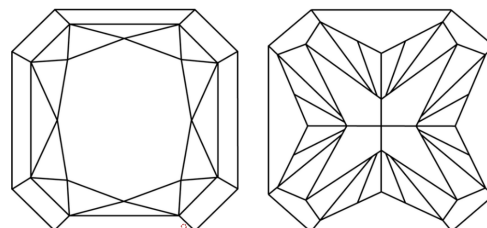
Polish EXCELLENT Symmetry EXCELLENT Fluorescence NONE Inscription(s) IGI LG750563735

Comments: This Laboratory Grown Diamond was created by Chemical Vapor Deposition (CVD) growth process. Type IIa

PROPORTIONS

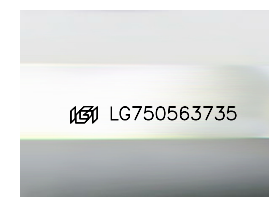


CLARITY CHARACTERISTICS



KEY TO SYMBOLS

Red symbols indicate internal characteristics. Green symbols indicate external characteristics.



Sample Image Used

COLOR

D E F G H I J Faint Very Light Light

CLARITY

FL IF VVS 1-2 VS 1-2 SI 1-2 I 1-3 Flawless Internally Flawless Very Very Slightly Included Very Slightly Included Slightly Included Included

