

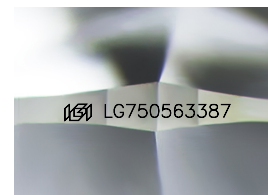
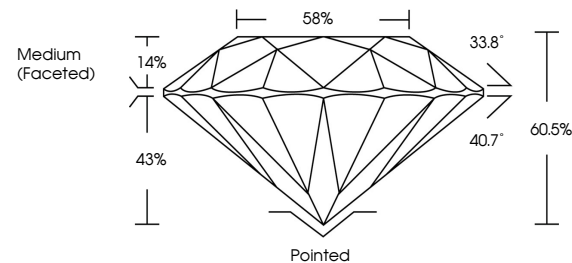


ELECTRONIC COPY

LABORATORY GROWN DIAMOND REPORT

LG750563387
Report verification at igi.org

PROPORTIONS



Sample Image Used

COLOR

D E F G H I J Faint Very Light Light

CLARITY

FL	IF	VVS ¹⁻²	VS ¹⁻²	SI ¹⁻²	I ¹⁻³
Flawless	Internally Flawless	Very Very Slightly Included	Very Slightly Included	Slightly Included	Included

LABORATORY GROWN DIAMOND REPORT



December 2, 2025

IGI Report Number **LG750563387**

Description	LABORATORY GROWN DIAMOND
-------------	--------------------------

Shape and Cutting Style **ROUND BRILLIANT**

Measurements 8.14 - 8.21 X 4.94 MM

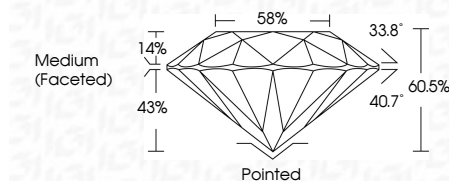
GRADING RESULTS

Carat Weight **2.01 CARATS**

Color Grade D

Clarity Grade WS 2

Cut Grade **IDEAL**



ADDITIONAL GRADING INFORMATION

Polish EXCELLENT

Symmetry **EXCELLENT**Fluorescence **NONE**Inscription(s) LG750563387

Comments: This Laboratory Grown Diamond was created by Chemical Vapor Deposition (CVD) growth process.
Type IIa



December 2, 2025	Color Weight	2.01 CARATS
GI Report No. LG760663387	Color Grade	D
ROUND BRILLIANT	Curly Grade	VVS 2
3.14 - 3.21 X 4.94 MM	Curly Grade	IDEAL
	Depth	60.6%
	Table	59%
	Grade	Medium (Faced)
	Culet	Pointed
	Polish	EXCELLENT
	Symmetry	EXCELLENT
	Fluorescence	NONE
	Inscription(s)	lg9115760663387
	Comments:	This Laboratory Grown Diamond was created by Chemical Vapor Deposition (CVD) growth process.
	Type IIA	



THIS DOCUMENT WAS PRODUCED WITH THE FOLLOWING SECURITY MEASURES: SPECIAL DOCUMENT PAPER, INK SCREENS, WATERMARK, BACKGROUND DESIGNS, HOLOGRAM AND OTHER SECURITY FEATURES NOT LISTED AND DO EXCEED DOCUMENT SECURITY INDUSTRY GUIDELINES