



**ELECTRONIC COPY**

LG750562653  
Report verification at igi.org



December 1, 2025

IGI Report Number **LG750562653**

Description **LABORATORY GROWN DIAMOND**

Shape and Cutting Style **EMERALD CUT**

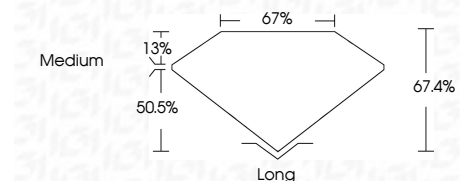
Measurements **15.01 X 10.05 X 6.77 MM**

**GRADING RESULTS**

Carat Weight **10.09 CARATS**

Color Grade **F**

Clarity Grade **VVS 2**



**ADDITIONAL GRADING INFORMATION**

Polish **EXCELLENT**

Symmetry **EXCELLENT**

Fluorescence **NONE**

Inscription(s) **IGI LG750562653**

Comments: This Laboratory Grown Diamond was created by Chemical Vapor Deposition (CVD) growth process. Type IIa



December 1, 2025  
IGI Report No LG750562653  
**EMERALD CUT**  
15.01 X 10.05 X 6.77 MM  
10.09 CARATS  
F  
VVS 2  
67.4%  
67%  
Medium  
Long  
EXCELLENT  
EXCELLENT  
NONE  
IGI LG750562653  
Comments: This Laboratory Grown Diamond was created by Chemical Vapor Deposition (CVD) growth process. Type IIa

December 1, 2025  
IGI Report Number **LG750562653**  
Description **LABORATORY GROWN DIAMOND**  
Shape and Cutting Style **EMERALD CUT**  
Measurements **15.01 X 10.05 X 6.77 MM**

**GRADING RESULTS**

Carat Weight **10.09 CARATS**

Color Grade **F**

Clarity Grade **VVS 2**

**ADDITIONAL GRADING INFORMATION**

Polish **EXCELLENT**

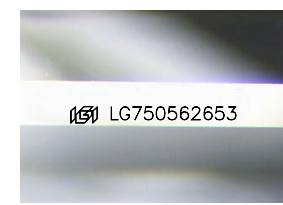
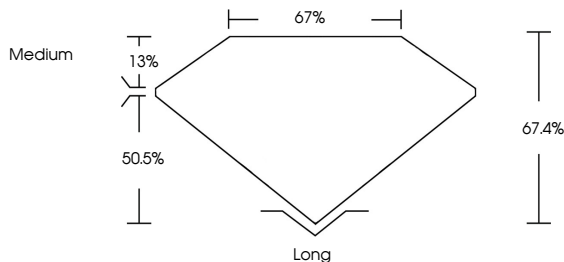
Symmetry **EXCELLENT**

Fluorescence **NONE**

Inscription(s) **IGI LG750562653**

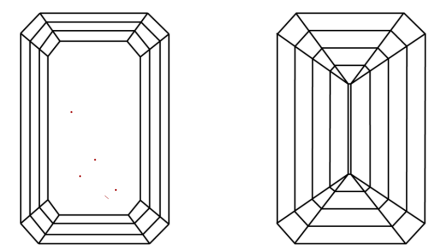
Comments: This Laboratory Grown Diamond was created by Chemical Vapor Deposition (CVD) growth process. Type IIa

**PROPORTIONS**



Sample Image Used

**CLARITY CHARACTERISTICS**



**KEY TO SYMBOLS**

Red symbols indicate internal characteristics.  
Green symbols indicate external characteristics.

**COLOR**

D E F G H I J Faint Very Light Light

**CLARITY**

FL	IF	VVS <sup>1-2</sup>	VS <sup>1-2</sup>	SI <sup>1-2</sup>	I <sup>1-3</sup>
Flawless	Internally Flawless	Very Very Slightly Included	Very Slightly Included	Slightly Included	Included

