



ELECTRONIC COPY

LABORATORY GROWN DIAMOND REPORT

December 1, 2025	
IGI Report Number	LG750562495
Description	LABORATORY GROWN DIAMOND
Shape and Cutting Style	HEXAGONAL STEP CUT
Measurements	11.54 X 5.65 X 3.80 MM

GRADING RESULTS

Carat Weight	2.04 CARATS
Color Grade	D
Clarity Grade	VVS 2

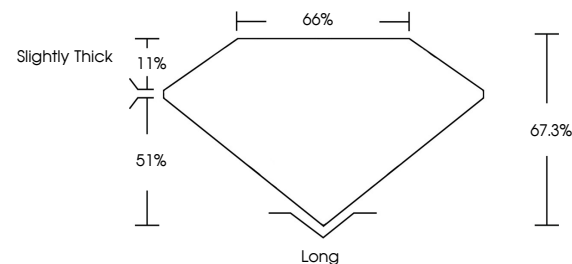
ADDITIONAL GRADING INFORMATION

Polish	EXCELLENT
Symmetry	EXCELLENT
Fluorescence	NONE
Inscription(s)	 LG750562495

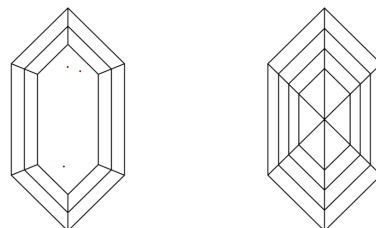
Comments: This Laboratory Grown Diamond was created by Chemical Vapor Deposition (CVD) growth process.
Type IIa

LG750562495
Report verification at igi.org

PROPORTIONS

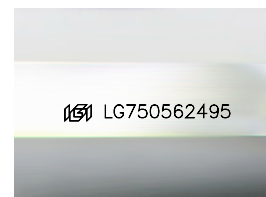


CLARITY CHARACTERISTICS



KEY TO SYMBOLS

Red symbols indicate internal characteristics.
Green symbols indicate external characteristics.



Sample Image Used

COLOR

D E F G H I J Faint Very Light Light

CLARITY

FL	IF	VVS ¹⁻²	VS ¹⁻²	SI ¹⁻²	I ¹⁻³
Flawless	Internally Flawless	Very Very Slightly Included	Very Slightly Included	Slightly Included	Included

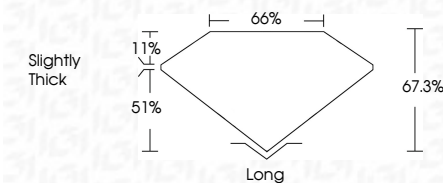
LABORATORY GROWN DIAMOND REPORT



December 1, 2025	
IGI Report Number	LG750562495
Description	LABORATORY GROWN DIAMOND
Shape and Cutting Style	HEXAGONAL STEP CUT
Measurements	11.54 X 5.65 X 3.80 MM

GRADING RESULTS

Carat Weight	2.04 CARATS
Color Grade	D
Clarity Grade	VVS 2



ADDITIONAL GRADING INFORMATION

Polish	EXCELLENT
Symmetry	EXCELLENT
Fluorescence	NONE
Inscription(s)	 LG750562495
<p>Comments: This Laboratory Grown Diamond was created by Chemical Vapor Deposition (CVD) growth process.</p> <p>Type Ila</p>	



© IGI 2020, International Gemological Institute

FD - 10 20



THIS DOCUMENT WAS PRODUCED WITH THE FOLLOWING SECURITY MEASURES: SPECIAL DOCUMENT PAPER, INK SCREENS, WATERMARK, BACKGROUND DESIGNS, HOLOGRAM AND OTHER SECURITY FEATURES NOT LISTED AND DO EXCEED DOCUMENT SECURITY INDUSTRY GUIDELINES

December 1, 2026	
GI Report No LG78592A96	
HORIZONTAL STEP CUT	
11.64 x 6.65 x 3.80 MM	
Color Grade	2/MA VS D
Clarity Grade	VVS 2
Inclusions	67.3%
Table	65%
Girdle	Slightly Thick
Culet	Long
Poleish	EXCELLENT
Symmetry	EXCELLENT
Fluorescence	NONE
(Inscriptions)	LGP/LG78592A96

Comments:
This is a Natural Growth Diamond was
treated by Chemical Vapor Deposition
(CVD) growth process.
Type IIa

Comments:
This Laboratory Grown Diamond was
created by Chemical Vapor Deposition
(CVD) growth process.

www.igi.org