



ELECTRONIC COPY

LG750562093
Report verification at igi.org



December 2, 2025

IGI Report Number **LG750562093**

Description **LABORATORY GROWN DIAMOND**

Shape and Cutting Style **SQUARE EMERALD CUT**

Measurements **8.15 X 8.05 X 5.51 MM**

GRADING RESULTS

Carat Weight **3.32 CARATS**

Color Grade **FANCY VIVID BLUE**

Clarity Grade **VVS 2**

December 2, 2025
IGI Report Number **LG750562093**
Description **LABORATORY GROWN DIAMOND**
Shape and Cutting Style **SQUARE EMERALD CUT**
Measurements **8.15 X 8.05 X 5.51 MM**

GRADING RESULTS

Carat Weight **3.32 CARATS**

Color Grade **FANCY VIVID BLUE**

Clarity Grade **VVS 2**

ADDITIONAL GRADING INFORMATION

Polish **EXCELLENT**

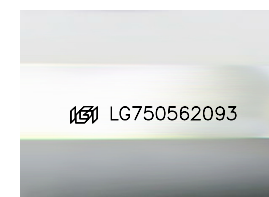
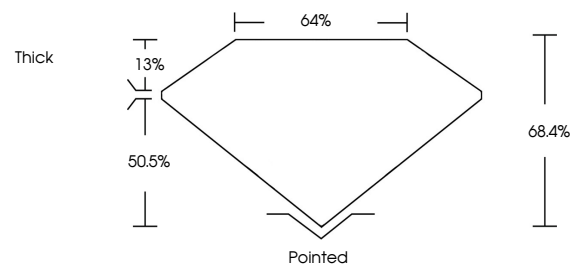
Symmetry **EXCELLENT**

Fluorescence **NONE**

Inscription(s) **LG750562093**

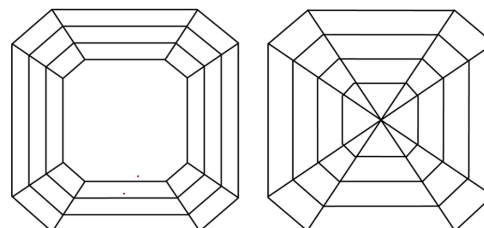
Comments: This Laboratory Grown Diamond was created by Chemical Vapor Deposition (CVD) growth process.
Indications of post-growth treatment.

PROPORTIONS



Sample Image Used

CLARITY CHARACTERISTICS



KEY TO SYMBOLS

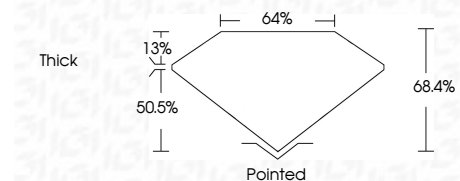
Red symbols indicate internal characteristics.
Green symbols indicate external characteristics.

COLOR

D E F G H I J Faint Very Light Light

CLARITY

FL	IF	VVS ¹⁻²	VS ¹⁻²	SI ¹⁻²	I ¹⁻³
Flawless	Internally Flawless	Very Very Slightly Included	Very Slightly Included	Slightly Included	Included



ADDITIONAL GRADING INFORMATION

Polish **EXCELLENT**

Symmetry **EXCELLENT**

Fluorescence **NONE**

Inscription(s) **LG750562093**

Comments: This Laboratory Grown Diamond was created by Chemical Vapor Deposition (CVD) growth process.
Indications of post-growth treatment.



December 2, 2025
IGI Report No LG750562093
SQUARE EMERALD CUT

3.32 CARATS
Carat Weight
FANCY VIVID BLUE
Color Grade

VVS 2
Clarity Grade

68.4%
Table

64%
Girdle

Thick
Culet

EXCELLENT
Polish

EXCELLENT
Symmetry

NONE
Fluorescence

IGI LG750562093
Inscription(s)

Comments: This Laboratory Grown Diamond was created by Chemical Vapor Deposition (CVD) growth process.
Indications of post-growth treatment.