



**ELECTRONIC COPY**

LG750559395  
Report verification at igi.org



December 26, 2025

IGI Report Number **LG750559395**

Description **LABORATORY GROWN DIAMOND**

Shape and Cutting Style **PRINCESS CUT**

Measurements **9.53 X 9.48 X 7.01 MM**

**GRADING RESULTS**

Carat Weight **5.53 CARATS**

Color Grade **E**

Clarity Grade **VVS 2**

December 26, 2025  
IGI Report Number **LG750559395**  
Description **LABORATORY GROWN DIAMOND**  
Shape and Cutting Style **PRINCESS CUT**  
Measurements **9.53 X 9.48 X 7.01 MM**

**GRADING RESULTS**

Carat Weight **5.53 CARATS**

Color Grade **E**

Clarity Grade **VVS 2**

**ADDITIONAL GRADING INFORMATION**

Polish **EXCELLENT**

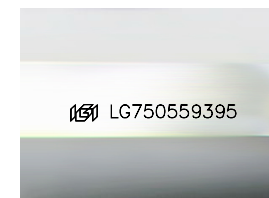
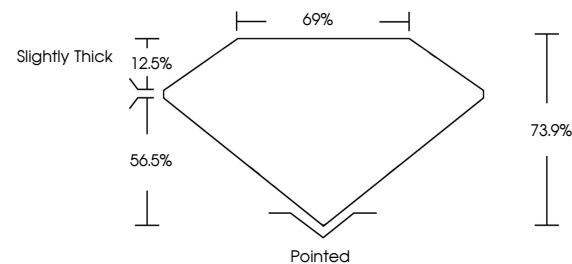
Symmetry **EXCELLENT**

Fluorescence **NONE**

Inscription(s) **LG750559395**

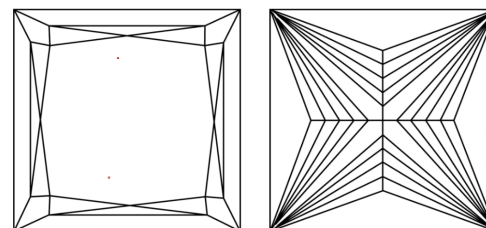
Comments: This Laboratory Grown Diamond was created by Chemical Vapor Deposition (CVD) growth process. Type IIa

**PROPORTIONS**



Sample Image Used

**CLARITY CHARACTERISTICS**



**KEY TO SYMBOLS**

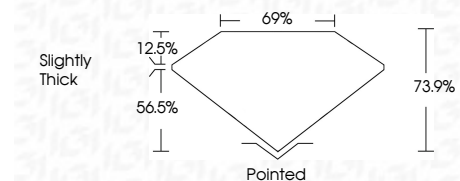
Red symbols indicate internal characteristics.  
Green symbols indicate external characteristics.

**COLOR**

D E F G H I J Faint Very Light Light

**CLARITY**

FL	IF	VVS <sup>1-2</sup>	VS <sup>1-2</sup>	SI <sup>1-2</sup>	I <sup>1-3</sup>
Flawless	Internally Flawless	Very Very Slightly Included	Very Slightly Included	Slightly Included	Included



**ADDITIONAL GRADING INFORMATION**

Polish **EXCELLENT**

Symmetry **EXCELLENT**

Fluorescence **NONE**

Inscription(s) **LG750559395**

Comments: This Laboratory Grown Diamond was created by Chemical Vapor Deposition (CVD) growth process. Type IIa



December 26, 2025  
IGI Report No LG750559395  
**PRINCESS CUT**

**5.53 CARATS**  
E

**9.53 X 9.48 X 7.01 MM**  
VVS 2  
73.9%  
69%  
Slightly Thick

**Pointed**  
EXCELLENT  
EXCELLENT  
NONE  
NONE  
IGI LG750559395

Comments: This Laboratory Grown Diamond was created by Chemical Vapor Deposition (CVD) growth process. Type IIa