



**ELECTRONIC COPY**

LG750559319  
Report verification at igi.org



December 19, 2025  
IGI Report Number **LG750559319**  
Description **LABORATORY GROWN DIAMOND**  
Shape and Cutting Style **PRINCESS CUT**  
Measurements **8.11 X 8.06 X 5.69 MM**  
**GRADING RESULTS**  
Carat Weight **3.22 CARATS**  
Color Grade **G**  
Clarity Grade **VS 2**

December 19, 2025  
IGI Report Number **LG750559319**  
Description **LABORATORY GROWN DIAMOND**  
Shape and Cutting Style **PRINCESS CUT**  
Measurements **8.11 X 8.06 X 5.69 MM**

**GRADING RESULTS**

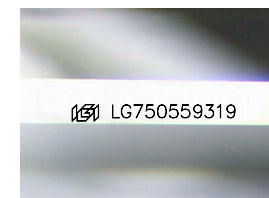
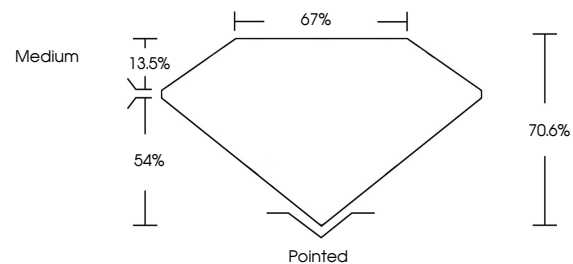
Carat Weight **3.22 CARATS**  
Color Grade **G**  
Clarity Grade **VS 2**

**ADDITIONAL GRADING INFORMATION**

Polish **EXCELLENT**  
Symmetry **VERY GOOD**  
Fluorescence **NONE**  
Inscription(s) **IGI LG750559319**

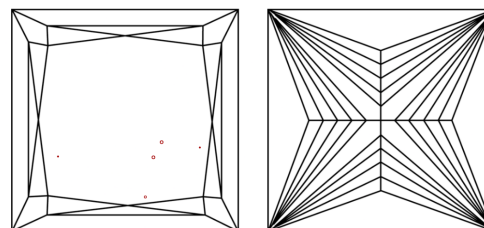
Comments: This Laboratory Grown Diamond was created by Chemical Vapor Deposition (CVD) growth process. Type IIa

**PROPORTIONS**



Sample Image Used

**CLARITY CHARACTERISTICS**



**KEY TO SYMBOLS**

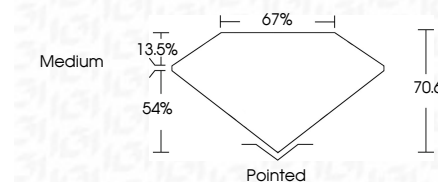
Red symbols indicate internal characteristics.  
Green symbols indicate external characteristics.

**COLOR**

D E F G H I J Faint Very Light Light

**CLARITY**

FL	IF	VS <sup>1-2</sup>	VS <sup>1-2</sup>	SI <sup>1-2</sup>	I <sup>1-3</sup>
Flawless	Internally Flawless	Very Very Slightly Included	Very Slightly Included	Slightly Included	Included



**ADDITIONAL GRADING INFORMATION**

Polish **EXCELLENT**  
Symmetry **VERY GOOD**  
Fluorescence **NONE**  
Inscription(s) **IGI LG750559319**  
Comments: This Laboratory Grown Diamond was created by Chemical Vapor Deposition (CVD) growth process. Type IIa



**IGI**



December 19, 2025  
IGI Report No LG750559319  
**PRINCESS CUT**  
8.11 X 8.06 X 5.69 MM  
3.22 CARATS  
G  
VS 2  
70.6%  
67%  
Medium  
Pointed  
EXCELLENT  
VERY GOOD  
NONE  
IGI LG750559319  
Comments: This Laboratory Grown Diamond was created by Chemical Vapor Deposition (CVD) growth process. Type IIa