



ELECTRONIC COPY

LG750559309
Report verification at igi.org



December 22, 2025

IGI Report Number **LG750559309**

Description **LABORATORY GROWN DIAMOND**

Shape and Cutting Style **CUT CORNERED
RECTANGULAR MODIFIED
BRILLIANT**

Measurements **7.31 X 4.95 X 3.24 MM**

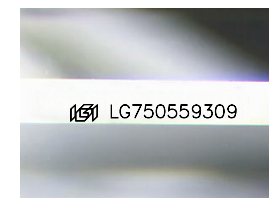
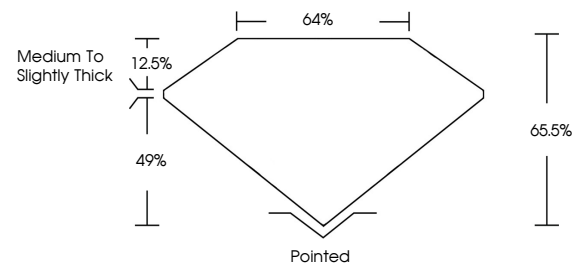
GRADING RESULTS

Carat Weight **1.01 CARAT**

Color Grade **G**

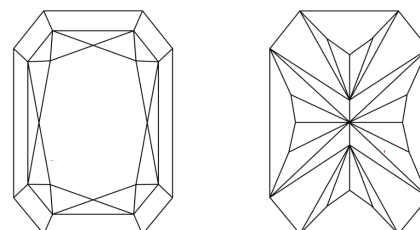
Clarity Grade **VVS 2**

PROPORTIONS



Sample Image Used

CLARITY CHARACTERISTICS



KEY TO SYMBOLS

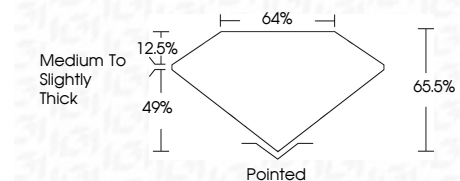
Red symbols indicate internal characteristics.
Green symbols indicate external characteristics.

COLOR

D E F G H I J Faint Very Light Light

CLARITY

FL	IF	VVS ¹⁻²	VS ¹⁻²	SI ¹⁻²	I ¹⁻³
Flawless	Internally Flawless	Very Very Slightly Included	Very Slightly Included	Slightly Included	Included



ADDITIONAL GRADING INFORMATION

Polish **EXCELLENT**

Symmetry **EXCELLENT**

Fluorescence **NONE**

Inscription(s) **IGI LG750559309**

Comments: This Laboratory Grown Diamond was created by Chemical Vapor Deposition (CVD) growth process. Type IIa



IGI



December 22, 2025
IGI Report No. LG750559309
CUT CORNERED RECT. MODIFIED BRILLIANT

7.31 X 4.95 X 3.24 MM

1.01 CARAT
G

VVS 2
65.5%
49%

Medium to Slightly Thick

Pointed
EXCELLENT
EXCELLENT
NONE
IGI LG750559309

Comments: This Laboratory Grown Diamond was created by Chemical Vapor Deposition (CVD) growth process. Type IIa