



ELECTRONIC COPY

LG750559159
Report verification at igi.org



December 18, 2025
IGI Report Number LG750559159
Description LABORATORY GROWN DIAMOND
Shape and Cutting Style ROUND BRILLIANT
Measurements 11.05 - 11.12 X 6.72 MM
GRADING RESULTS
Carat Weight 5.00 CARATS
Color Grade E
Clarity Grade VVS 2
Cut Grade IDEAL

December 18, 2025
IGI Report Number LG750559159
Description LABORATORY GROWN DIAMOND
Shape and Cutting Style ROUND BRILLIANT
Measurements 11.05 - 11.12 X 6.72 MM

GRADING RESULTS

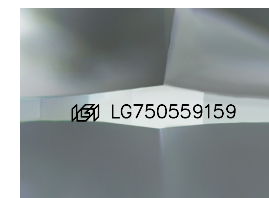
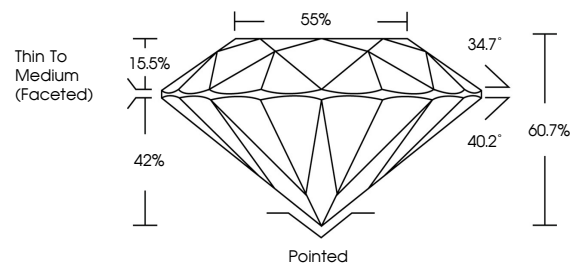
Carat Weight 5.00 CARATS
Color Grade E
Clarity Grade VVS 2
Cut Grade IDEAL

ADDITIONAL GRADING INFORMATION

Polish EXCELLENT
Symmetry EXCELLENT
Fluorescence NONE
Inscription(s) IGI LG750559159

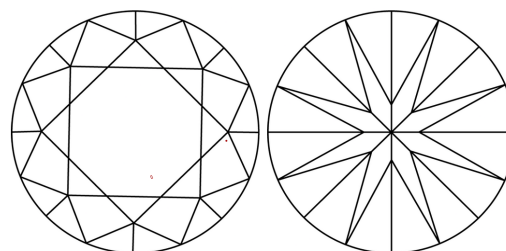
Comments: This Laboratory Grown Diamond was created by Chemical Vapor Deposition (CVD) growth process. Type IIa

PROPORTIONS



Sample Image Used

CLARITY CHARACTERISTICS



KEY TO SYMBOLS

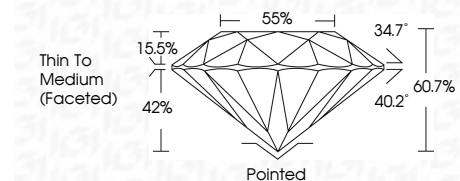
Red symbols indicate internal characteristics.
Green symbols indicate external characteristics.

COLOR

D E F G H I J Faint Very Light Light

CLARITY

FL IF VVS 1-2 VS 1-2 SI 1-2 I 1-3
Flawless Internally Flawless Very Very Slightly Included Very Slightly Included Slightly Included Included



ADDITIONAL GRADING INFORMATION

Polish EXCELLENT
Symmetry EXCELLENT
Fluorescence NONE
Inscription(s) IGI LG750559159
Comments: This Laboratory Grown Diamond was created by Chemical Vapor Deposition (CVD) growth process. Type IIa



December 18, 2025
IGI Report No LG750559159
ROUND BRILLIANT
5.00 CARATS E
11.05 - 11.12 X 6.72 MM
Carat Weight 5.00
Color Grade E
Clarity Grade VVS 2
Cut Grade IDEAL
Depth 60.7%
Table 42%
Girdle 55%
Thin To Medium (Faceted)
Culet Pointed
Polish EXCELLENT
Symmetry EXCELLENT
Fluorescence NONE
Inscriptions(s) IGI LG750559159
Comments: This Laboratory Grown Diamond was created by Chemical Vapor Deposition (CVD) growth process. Type IIa