



**ELECTRONIC COPY**

## LABORATORY GROWN DIAMOND REPORT

November 26, 2025	
IGI Report Number	LG750557949
Description	LABORATORY GROWN DIAMOND
Shape and Cutting Style	PRINCESS CUT
Measurements	6.12 X 6.10 X 4.31 MM

## GRADING RESULTS

Carat Weight	1.41 CARAT
Color Grade	G
Clarity Grade	VS 1

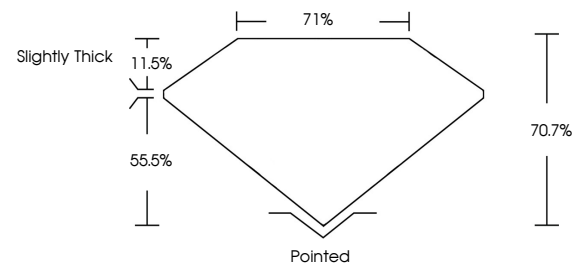
### ADDITIONAL GRADING INFORMATION

Polish	EXCELLENT
Symmetry	EXCELLENT
Fluorescence	NONE
Inscription(s)	 LG750557949

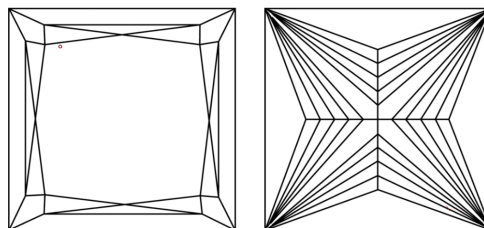
Comments: This Laboratory Grown Diamond was created by Chemical Vapor Deposition (CVD) growth process.  
Type IIa

LG750557949  
Report verification at [igi.org](https://igi.org)

## PROPORTIONS

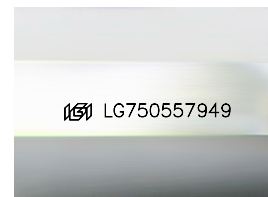


## CLARITY CHARACTERISTICS



## KEY TO SYMBOLS

Red symbols indicate internal characteristics.  
Green symbols indicate external characteristics.



Sample Image Used

**COLOR**

D E F G H I J Faint Very Light Light

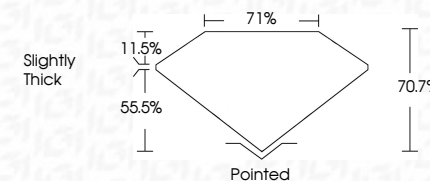
## CLARITY

FL	IF	VVS <sup>1-2</sup>	VS <sup>1-2</sup>	SI <sup>1-2</sup>	I <sup>1-3</sup>
Flawless	Internally Flawless	Very Very Slightly Included	Very Slightly Included	Slightly Included	Included

## LABORATORY GROWN DIAMOND REPORT



November 26, 2025	
IGI Report Number	LG750557949
Description	LABORATORY GROWN DIAMOND
Shape and Cutting Style	PRINCESS CUT
Measurements	6.12 X 6.10 X 4.31 MM
GRADING RESULTS	
Carat Weight	1.41 CARAT
Color Grade	G
Clarity Grade	VS 1



### ADDITIONAL GRADING INFORMATION

Polish	EXCELLENT
Symmetry	EXCELLENT
Fluorescence	NONE
Inscription(s)	 LG750557949
Comments: This Laboratory Grown Diamond was created by Chemical Vapor Deposition (CVD) growth process.	
Type IIa	



IG



© IGI 2020, International Gemological Institute

FD - 10 20

**www.igi.org**

THIS DOCUMENT WAS PRODUCED WITH THE FOLLOWING SECURITY MEASURES: SPECIAL DOCUMENT PAPER, INK SCREENS, WATERMARK, BACKGROUND DESIGNS, HOLOGRAM AND OTHER SECURITY FEATURES NOT LISTED AND DO EXCEED DOCUMENT SECURITY INDUSTRY GUIDELINES

November 26, 2025  
GI Report No LG750557949

<p> <b>GR Report No. LG75057949</b>  <b>PROCESS CUT</b>  <b>1.12 X 1.0 X 4.31 MM</b> </p>	<p> <b>1.41 CARAT</b>  <b>G</b>  <b>Vs 1</b>  <b>70.7%</b>  <b>71%</b>  <b>Slightly Thick</b> </p>	<p> <b>Pointed</b>  <b>EXCELLENT</b>  <b>EXCELLENT</b>  <b>NONE</b> </p>
<p> <b>Carat Weight</b>  <b>Color Grade</b>  <b>Clarity Grade</b>  <b>Cut</b>  <b>Depth</b>  <b>Table</b>  <b>Girdle</b> </p>	<p> <b>Fluorescence</b>  <b>Symmetry</b>  <b>Polish</b>  <b>Culet</b> </p>	

**Comments:**  
This Laboratory Grown Diamond was  
created by Chemical Vapor Deposition  
(CVD) growth process.