

ELECTRONIC COPY

LABORATORY GROWN DIAMOND REPORT

November 20, 2025	
IGI Report Number	LG750556363
Description	LABORATORY GROWN DIAMOND
Shape and Cutting Style	ROUND BRILLIANT
Measurements	8.20 - 8.24 X 4.93 MM

GRADING RESULTS

Carat Weight	2.04 CARATS
Color Grade	D
Clarity Grade	VS 1
Cut Grade	IDEAL

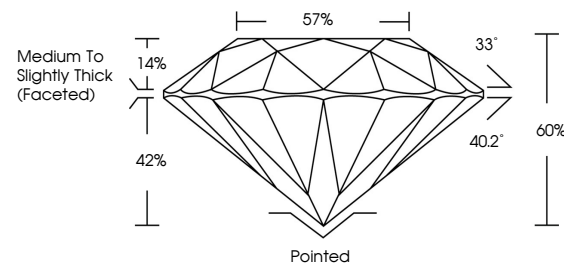
ADDITIONAL GRADING INFORMATION

Polish	EXCELLENT
Symmetry	EXCELLENT
Fluorescence	NONE
Inscription(s)	 LG750556363

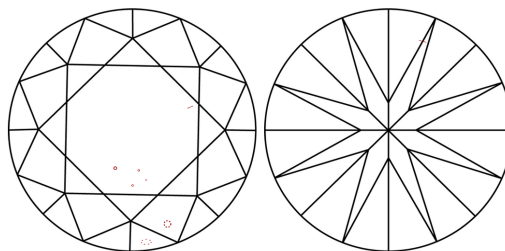
Comments: This Laboratory Grown Diamond was created by Chemical Vapor Deposition (CVD) growth process.
Type IIa

LG750556363
Report verification at igi.org

PROPORTIONS

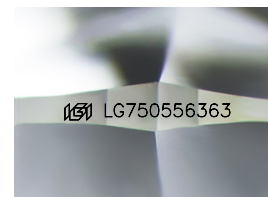


CLARITY CHARACTERISTICS



KEY TO SYMBOLS

Red symbols indicate internal characteristics.
Green symbols indicate external characteristics.



Sample Image Used

COLOR

D E F G H I J Faint Very Light Light

CLARITY

FL IF VWS¹⁻² VS¹⁻² SI¹⁻² |¹⁻³

Flawless	Internally Flawless	Very Very Slightly Included	Very Slightly Included	Slightly Included	Included
----------	---------------------	-----------------------------	------------------------	-------------------	----------

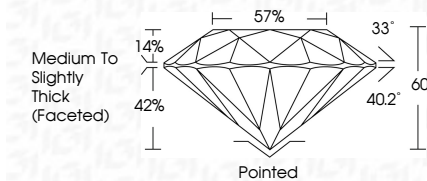
LABORATORY GROWN DIAMOND REPORT



November 20, 2025	
IGI Report Number	LG750556363
Description	LABORATORY GROWN DIAMOND
Shape and Cutting Style	ROUND BRILLIANT
Measurements	8.20 - 8.24 X 4.93 MM

GRADING RESULTS

Carat Weight	2.04 CARATS
Color Grade	D
Clarity Grade	VS 1
Cut Grade	IDEAL



ADDITIONAL GRADING INFORMATION

Polish	EXCELLENT
Symmetry	EXCELLENT
Fluorescence	NONE
Inscription(s)	 LG7505556363
Comments: This Laboratory Grown Diamond was created by Chemical Vapor Deposition (CVD) growth process.	
Type IIa	



© IGI 2020, International Gemological Institute

FD - 10 20

November 20, 2025
 IGI Report No LG750556363
 ROUND BRILLIANT

2.20 - 8.24 X 4.93 MM	Carat Weight	2.04 CARATS
	Color Grade	D
	Clarity Grade	VS 1
	Cut Grade	IDEAL
	Depth	60%
	Table	57%
	Girdle	Medium To Slightly Thick (Faceted)
	Culet	Pointed
	Polish	EXCELLENT
	Symmetry	EXCELLENT
	Fluorescence	NONE

Comments:
This Laboratory Grown Diamond was
created by Chemical Vapor Deposition
(CVD) growth process.