



ELECTRONIC COPY

LABORATORY GROWN DIAMOND REPORT

November 24, 2025	
IGI Report Number	LG750555925
Description	LABORATORY GROWN DIAMOND
Shape and Cutting Style	CUT CORNERED RECTANGULAR MODIFIED BRILLIANT
Measurements	10.28 X 7.15 X 4.81 MM

GRADING RESULTS

Carat Weight	3.07 CARATS
Color Grade	D
Clarity Grade	VS 1

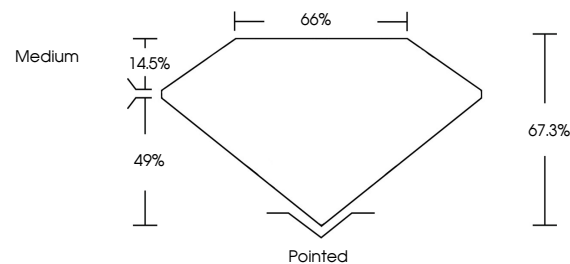
ADDITIONAL GRADING INFORMATION

Polish	EXCELLENT
Symmetry	EXCELLENT
Fluorescence	NONE
Inscription(s)	 LG750555925

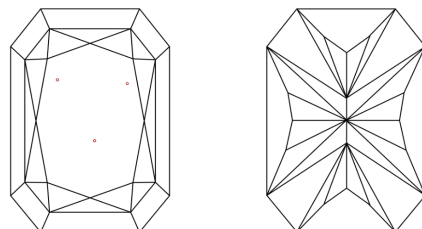
Comments: This Laboratory Grown Diamond was created by Chemical Vapor Deposition (CVD) growth process.
Type IIa

LG750555925
Report verification at lgi.org

PROPORTIONS

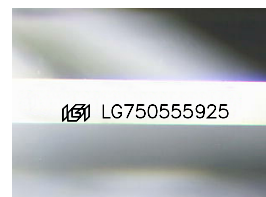


CLARITY CHARACTERISTICS



KEY TO SYMBOLS

Red symbols indicate internal characteristics.
Green symbols indicate external characteristics.



Sample Image Used

COLOR

D E F G H I J Faint Very Light Light

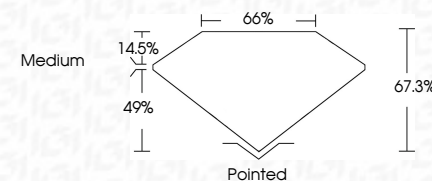
CLARITY

FL	IF	VVS ¹⁻²	VS ¹⁻²	SI ¹⁻²	I ¹⁻³
Flawless	Internally Flawless	Very Very Slightly Included	Very Slightly Included	Slightly Included	Included

LABORATORY GROWN DIAMOND REPORT



November 24, 2025	
IGI Report Number	LG750555925
Description	LABORATORY GROWN DIAMOND
Shape and Cutting Style	CUT CORNERED RECTANGULAR MODIFIED BRILLIANT
Measurements	10.28 X 7.15 X 4.81 MM
GRADING RESULTS	
Carat Weight	3.07 CARATS
Color Grade	D
Clarity Grade	VS 1



ADDITIONAL GRADING INFORMATION

Polish	EXCELLENT
Symmetry	EXCELLENT
Fluorescence	NONE
Inscription(s)	 LG750555925
<p>Comments: This Laboratory Grown Diamond was created by Chemical Vapor Deposition (CVD) growth process.</p> <p>Type IIa</p>	



© IGI 2020, International Gemological Institute

FD - 10 20

www.igi.org

THIS DOCUMENT WAS PRODUCED WITH THE FOLLOWING SECURITY MEASURES: SPECIAL DOCUMENT PAPER, INK SCREENS, WATERMARK, BACKGROUND DESIGNS, HOLOGRAM AND OTHER SECURITY FEATURES NOT LISTED AND DO EXCEED DOCUMENT SECURITY INDUSTRY GUIDELINE

November 24, 2025	3.07 CARATS
GI REPORT NO. LG76055925	D
CU COVERED RECT. MODIFIED BRILLIANT	VS 1
	67.3%
	65%
	Medium
	Polished
	EXCELLENT
	EXCELLENT
	NONE
	681 LG76055925

10.28 X 7.15 X 4.81 MM

Carat Weight

Color Grade

Clarity Grade

Depth

Table

Girdle

Culet

Polish

Symmetry

Fluorescence

Inscription(s)

Comments:

The Laboratory Grown Diamond was created by Chemical Vapor Deposition growth process.

Type IId