



**ELECTRONIC COPY**

LG750554989  
Report verification at igi.org



November 22, 2025  
IGI Report Number **LG750554989**  
Description **LABORATORY GROWN DIAMOND**  
Shape and Cutting Style **CUSHION MODIFIED BRILLIANT**  
Measurements **8.83 X 7.60 X 4.64 MM**  
**GRADING RESULTS**  
Carat Weight **2.75 CARATS**  
Color Grade **FANCY BROWNISH PINK**  
Clarity Grade **VS 2**

**LABORATORY GROWN DIAMOND REPORT**

November 22, 2025  
IGI Report Number **LG750554989**  
Description **LABORATORY GROWN DIAMOND**  
Shape and Cutting Style **CUSHION MODIFIED BRILLIANT**  
Measurements **8.83 X 7.60 X 4.64 MM**

**GRADING RESULTS**

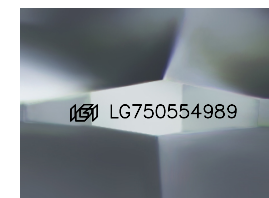
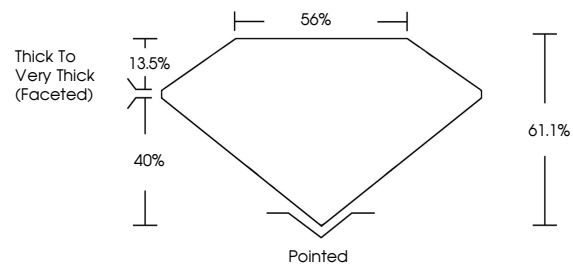
Carat Weight **2.75 CARATS**  
Color Grade **FANCY BROWNISH PINK**  
Clarity Grade **VS 2**

**ADDITIONAL GRADING INFORMATION**

Polish **EXCELLENT**  
Symmetry **EXCELLENT**  
Fluorescence **SLIGHT**  
Inscription(s) **LG750554989**

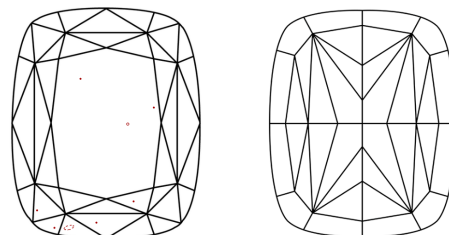
Comments: This Laboratory Grown Diamond was created by Chemical Vapor Deposition (CVD) growth process.  
Indications of post-growth treatment.

**PROPORTIONS**



Sample Image Used

**CLARITY CHARACTERISTICS**



**KEY TO SYMBOLS**

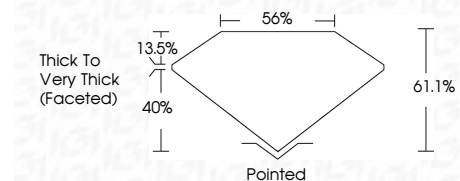
Red symbols indicate internal characteristics.  
Green symbols indicate external characteristics.

**COLOR**

D E F G H I J Faint Very Light Light

**CLARITY**

FL	IF	VS <sup>1-2</sup>	VS <sup>1-2</sup>	SI <sup>1-2</sup>	I <sup>1-3</sup>
Flawless	Internally Flawless	Very Very Slightly Included	Very Slightly Included	Slightly Included	Included



**ADDITIONAL GRADING INFORMATION**

Polish **EXCELLENT**  
Symmetry **EXCELLENT**  
Fluorescence **SLIGHT**  
Inscription(s) **LG750554989**  
Comments: This Laboratory Grown Diamond was created by Chemical Vapor Deposition (CVD) growth process.  
Indications of post-growth treatment.



November 22, 2025  
IGI Report No **LG750554989**  
**CUSHION MODIFIED BRILLIANT**  
**8.83 X 7.60 X 4.64 MM**  
Carat Weight **2.75 CARATS**  
Color Grade **FANCY BROWNISH PINK**  
Clarity Grade **VS 2**  
Depth **61.1%**  
Table **56%**  
Girdle **Thick to Very Thick (Faceted)**  
Culet **Pointed**  
Polish **EXCELLENT**  
Symmetry **EXCELLENT**  
Fluorescence **SLIGHT**  
Inscription(s) **LG750554989**  
Comments: This Laboratory Grown Diamond was created by Chemical Vapor Deposition (CVD) growth process.  
Indications of post-growth treatment.