



INTERNATIONAL GEMOLOGICAL INSTITUTE

ELECTRONIC COPY

LABORATORY GROWN DIAMOND REPORT

November 26, 2025

IGI Report Number

LG750554684

Description

LABORATORY GROWN DIAMOND

Shape and Cutting Style

HEART BRILLIANT

Measurements

5.11 X 5.94 X 3.10 MM

GRADING RESULTS

Carat Weight

0.58 CARAT

Color Grade

FANCY PINK

Clarity Grade

VVS 2

ADDITIONAL GRADING INFORMATION

Polish

VERY GOOD

Symmetry

VERY GOOD

Fluorescence

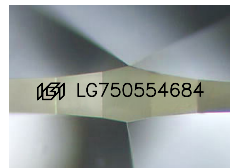
STRONG

Inscription(s)

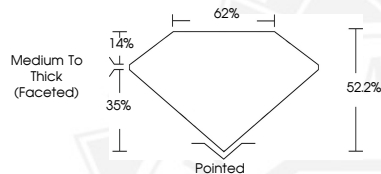
IGI LG750554684

Comments: This Laboratory Grown Diamond was created by
Chemical Vapor Deposition (CVD) growth process.

Indications of post-growth treatment.



Sample Image Used



November 26, 2025

IGI Report Number LG750554684

HEART BRILLIANT

LABORATORY GROWN DIAMOND

5.11 X 5.94 X 3.10 MM

Carat Weight 0.58 CARAT

Color Grade FANCY PINK

Clarity Grade VVS 2

Polish VERY GOOD

Symmetry VERY GOOD

Fluorescence STRONG

Inscription(s) IGI LG750554684

Comments: This Laboratory Grown
Diamond was created by
Chemical Vapor Deposition (CVD)
growth process. Indications of
post-growth treatment.



November 26, 2025

IGI Report Number LG750554684

HEART BRILLIANT

LABORATORY GROWN DIAMOND

5.11 X 5.94 X 3.10 MM

Carat Weight 0.58 CARAT

Color Grade FANCY PINK

Clarity Grade VVS 2

Polish VERY GOOD

Symmetry VERY GOOD

Fluorescence STRONG

Inscription(s) IGI LG750554684

Comments: This Laboratory Grown
Diamond was created by
Chemical Vapor Deposition (CVD)
growth process. Indications of
post-growth treatment.



THIS DOCUMENT WAS PRODUCED WITH THE FOLLOWING SECURITY MEASURES: SPECIAL DOCUMENT PAPER, INK SCREENS, WATERMARK, BACKGROUND DESIGNS, HOLOGRAM AND OTHER SECURITY FEATURES NOT LISTED AND DO EXCEED DOCUMENT SECURITY INDUSTRY GUIDELINES.

For terms & conditions and to verify this report, please visit www.igi.org