



ELECTRONIC COPY

LG750549519
Report verification at igi.org



November 21, 2025

IGI Report Number **LG750549519**

Description **LABORATORY GROWN DIAMOND**

Shape and Cutting Style **PRINCESS CUT**

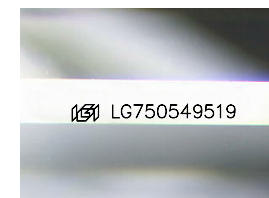
Measurements **6.17 X 6.10 X 4.43 MM**

GRADING RESULTS

Carat Weight **1.45 CARAT**

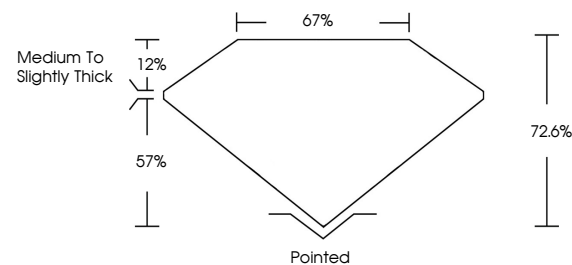
Color Grade **E**

Clarity Grade **VS 1**

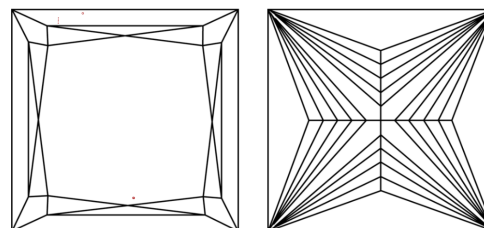


Sample Image Used

PROPORTIONS



CLARITY CHARACTERISTICS



KEY TO SYMBOLS

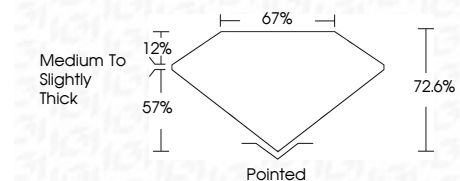
Red symbols indicate internal characteristics.
Green symbols indicate external characteristics.

COLOR

D E F G H I J Faint Very Light Light

CLARITY

FL	IF	VS ¹⁻²	VS ¹⁻²	SI ¹⁻²	I ¹⁻³
Flawless	Internally Flawless	Very Very Slightly Included	Very Slightly Included	Slightly Included	Included



ADDITIONAL GRADING INFORMATION

Polish **EXCELLENT**

Symmetry **EXCELLENT**

Fluorescence **NONE**

Inscription(s) **IGI LG750549519**

Comments: This Laboratory Grown Diamond was created by Chemical Vapor Deposition (CVD) growth process. Type IIa



IGI



November 21, 2025	1.45 CARAT	E	VS 1	72.6%	67%	Medium to Slightly Thick	Pointed
IGI Report No LG750549519	6.17 X 6.10 X 4.43 MM	PRINCESS CUT	Color Grade	Depth	Table	Girdle	Culet
			Color Grade	Clarity Grade	Table	Girdle	Polish
			Color Grade	Clarity Grade	Table	Girdle	Symmetry
			Color Grade	Clarity Grade	Table	Girdle	Fluorescence
			Color Grade	Clarity Grade	Table	Girdle	Inscription(s)
			Color Grade	Clarity Grade	Table	Girdle	Inscription(s)

Comments: This Laboratory Grown Diamond was created by Chemical Vapor Deposition (CVD) growth process. Type IIa