



ELECTRONIC COPY

LG750540865
Report verification at igi.org



June 11, 2026
IGI Report Number **LG750540865**
Description **LABORATORY GROWN DIAMOND**
Shape and Cutting Style **ROUND ROSE CUT**
Measurements **9.01 - 8.99 X 2.61 MM**

GRADING RESULTS

Carat Weight **2.01 CARATS**
Color Grade **FANCY LIGHT BROWN PINK**
Clarity Grade **VS 1**

June 11, 2026
IGI Report Number **LG750540865**
Description **LABORATORY GROWN DIAMOND**
Shape and Cutting Style **ROUND ROSE CUT**
Measurements **9.01 - 8.99 X 2.61 MM**

GRADING RESULTS

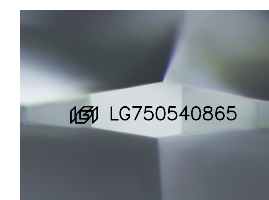
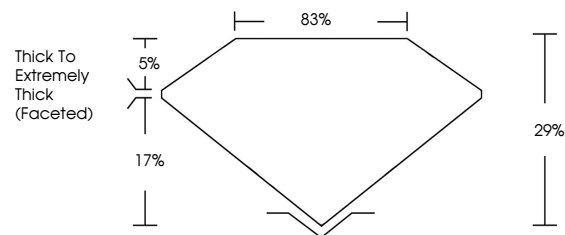
Carat Weight **2.01 CARATS**
Color Grade **FANCY LIGHT BROWN PINK**
Clarity Grade **VS 1**

ADDITIONAL GRADING INFORMATION

Polish **EXCELLENT**
Symmetry **EXCELLENT**
Fluorescence **SLIGHT**
Inscription(s) **IGI LG750540865**

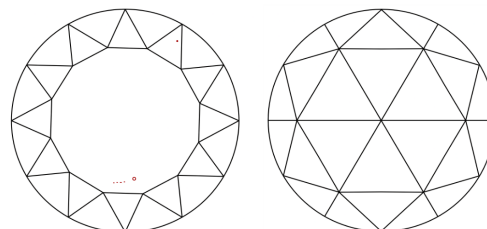
Comments: This Laboratory Grown Diamond was created by Chemical Vapor Deposition (CVD) growth process.
Indications of post-growth treatment.

PROPORTIONS



Sample Image Used

CLARITY CHARACTERISTICS



KEY TO SYMBOLS

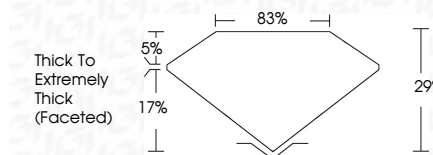
Red symbols indicate internal characteristics.
Green symbols indicate external characteristics.

COLOR

D E F G H I J Faint Very Light Light

CLARITY

FL	IF	VS ¹⁻²	VS ¹⁻²	SI ¹⁻²	I ¹⁻³
Flawless	Internally Flawless	Very Very Slightly Included	Very Slightly Included	Slightly Included	Included



ADDITIONAL GRADING INFORMATION

Polish **EXCELLENT**
Symmetry **EXCELLENT**
Fluorescence **SLIGHT**
Inscription(s) **IGI LG750540865**
Comments: This Laboratory Grown Diamond was created by Chemical Vapor Deposition (CVD) growth process.
Indications of post-growth treatment.



IGI



June 11, 2026
IGI Report No LG750540865
ROUND ROSE CUT
2.01 CARATS
Carat Weight **2.01 CARATS**
Color Grade **FANCY LIGHT BROWN PINK**
Clarity Grade **VS 1**
Depth **29%**
Table **83%**
Girdle **Thick To Extremely Thick (Faceted)**
Culet **EXCELLENT**
Polish **EXCELLENT**
Symmetry **EXCELLENT**
Fluorescence **SLIGHT**
Inscription(s) **IGI LG750540865**
Comments: This Laboratory Grown Diamond was created by Chemical Vapor Deposition (CVD) growth process.
Indications of post-growth treatment.