



ELECTRONIC COPY

LG750540769
Report verification at igi.org



June 2, 2026

IGI Report Number **LG750540769**

Description **LABORATORY GROWN DIAMOND**

Shape and Cutting Style **CUSHION BRILLIANT**

Measurements **9.47 X 6.34 X 4.11 MM**

GRADING RESULTS

Carat Weight **2.07 CARATS**

Color Grade **FANCY INTENSE PINK**

Clarity Grade **VVS 2**

June 2, 2026

IGI Report Number **LG750540769**

Description **LABORATORY GROWN DIAMOND**

Shape and Cutting Style **CUSHION BRILLIANT**

Measurements **9.47 X 6.34 X 4.11 MM**

GRADING RESULTS

Carat Weight **2.07 CARATS**

Color Grade **FANCY INTENSE PINK**

Clarity Grade **VVS 2**

ADDITIONAL GRADING INFORMATION

Polish **EXCELLENT**

Symmetry **EXCELLENT**

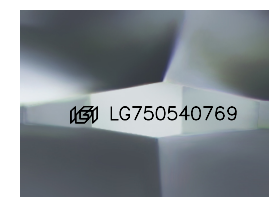
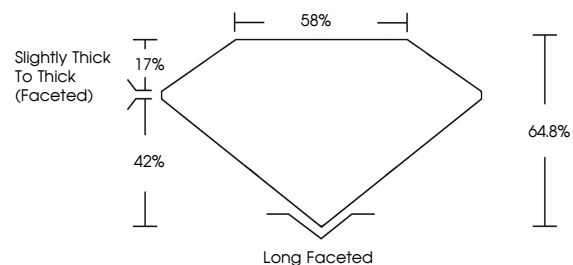
Fluorescence **SLIGHT**

Inscription(s) **IGI LG750540769**

Comments: This Laboratory Grown Diamond was created by Chemical Vapor Deposition (CVD) growth process.

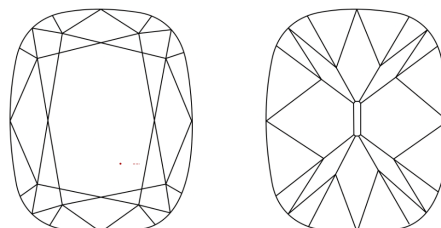
Indications of post-growth treatment.

PROPORTIONS



Sample Image Used

CLARITY CHARACTERISTICS



KEY TO SYMBOLS

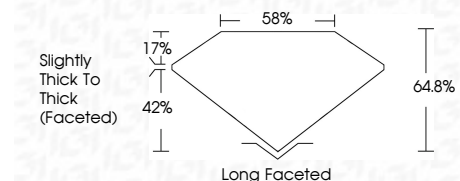
Red symbols indicate internal characteristics.
Green symbols indicate external characteristics.

COLOR

D E F G H I J Faint Very Light Light

CLARITY

FL	IF	VVS ¹⁻²	VS ¹⁻²	SI ¹⁻²	I ¹⁻³
Flawless	Internally Flawless	Very Very Slightly Included	Very Slightly Included	Slightly Included	Included



ADDITIONAL GRADING INFORMATION

Polish **EXCELLENT**

Symmetry **EXCELLENT**

Fluorescence **SLIGHT**

Inscription(s) **IGI LG750540769**

Comments: This Laboratory Grown Diamond was created by Chemical Vapor Deposition (CVD) growth process.

Indications of post-growth treatment.



June 2, 2026
IGI Report No LG750540769
CUSHION BRILLIANT
9.47 X 6.34 X 4.11 MM
2.07 CARATS
FANCY INTENSE PINK
VVS 2
64.8%
85%
Slightly Thick To Thick (Faceted)
Long Faceted
EXCELLENT
EXCELLENT
SLIGHT
IGI LG750540769

Comments: This Laboratory Grown Diamond was created by Chemical Vapor Deposition (CVD) growth process. Indications of post-growth treatment.