



ELECTRONIC COPY

LG750540768
Report verification at igi.org



June 3, 2026

IGI Report Number **LG750540768**

Description **LABORATORY GROWN DIAMOND**

Shape and Cutting Style **CUSHION BRILLIANT**

Measurements **9.34 X 6.59 X 4.38 MM**

GRADING RESULTS

Carat Weight **2.26 CARATS**

Color Grade **FANCY INTENSE PINK**

Clarity Grade **VS 1**

June 3, 2026
IGI Report Number **LG750540768**
Description **LABORATORY GROWN DIAMOND**
Shape and Cutting Style **CUSHION BRILLIANT**
Measurements **9.34 X 6.59 X 4.38 MM**

GRADING RESULTS

Carat Weight **2.26 CARATS**

Color Grade **FANCY INTENSE PINK**

Clarity Grade **VS 1**

ADDITIONAL GRADING INFORMATION

Polish **EXCELLENT**

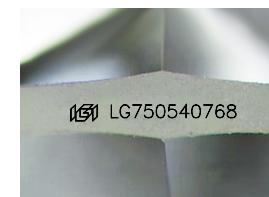
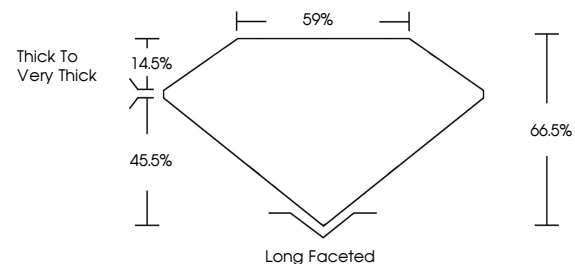
Symmetry **EXCELLENT**

Fluorescence **SLIGHT**

Inscription(s) **IGI LG750540768**

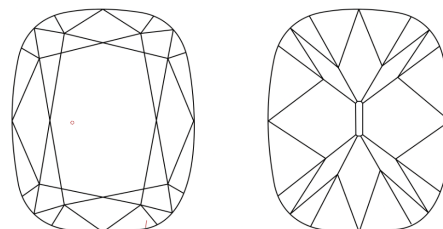
Comments: This Laboratory Grown Diamond was created by Chemical Vapor Deposition (CVD) growth process.
Indications of post-growth treatment.

PROPORTIONS



Sample Image Used

CLARITY CHARACTERISTICS



KEY TO SYMBOLS

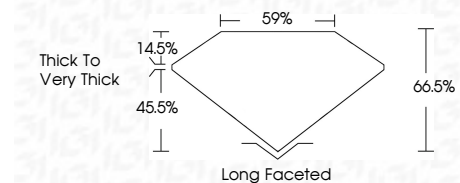
Red symbols indicate internal characteristics.
Green symbols indicate external characteristics.

COLOR

D E F G H I J Faint Very Light Light

CLARITY

FL	IF	VS ¹⁻²	VS ¹⁻²	SI ¹⁻²	I ¹⁻³
Flawless	Internally Flawless	Very Very Slightly Included	Very Slightly Included	Slightly Included	Included



ADDITIONAL GRADING INFORMATION

Polish **EXCELLENT**

Symmetry **EXCELLENT**

Fluorescence **SLIGHT**

Inscription(s) **IGI LG750540768**

Comments: This Laboratory Grown Diamond was created by Chemical Vapor Deposition (CVD) growth process.
Indications of post-growth treatment.



IGI



June 3, 2026
IGI Report No LG750540768
CUSHION BRILLIANT
9.34 X 6.59 X 4.38 MM
2.26 CARATS
FANCY INTENSE PINK
VS 1
66.5%
59%
Thick to Very Thick
Long Faceted
EXCELLENT
EXCELLENT
SLIGHT
IGI LG750540768
Comments: This Laboratory Grown Diamond was created by Chemical Vapor Deposition (CVD) growth process.
Indications of post-growth treatment.