



ELECTRONIC COPY

LG750540742
Report verification at igi.org



May 28, 2026

IGI Report Number **LG750540742**

Description **LABORATORY GROWN DIAMOND**

Shape and Cutting Style **CUSHION BRILLIANT**

Measurements **9.09 X 6.68 X 4.14 MM**

GRADING RESULTS

Carat Weight **2.10 CARATS**

Color Grade **FANCY INTENSE PINK**

Clarity Grade **VVS 2**

May 28, 2026

IGI Report Number **LG750540742**

Description **LABORATORY GROWN DIAMOND**

Shape and Cutting Style **CUSHION BRILLIANT**

Measurements **9.09 X 6.68 X 4.14 MM**

GRADING RESULTS

Carat Weight **2.10 CARATS**

Color Grade **FANCY INTENSE PINK**

Clarity Grade **VVS 2**

ADDITIONAL GRADING INFORMATION

Polish **EXCELLENT**

Symmetry **VERY GOOD**

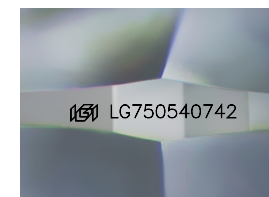
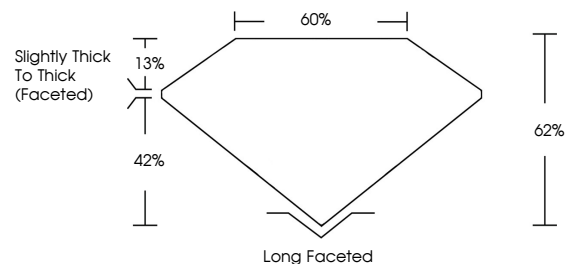
Fluorescence **SLIGHT**

Inscription(s) **IGI LG750540742**

Comments: This Laboratory Grown Diamond was created by Chemical Vapor Deposition (CVD) growth process.

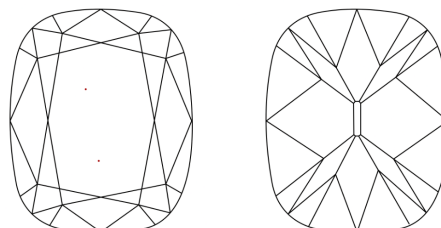
Indications of post-growth treatment.

PROPORTIONS



Sample Image Used

CLARITY CHARACTERISTICS



KEY TO SYMBOLS

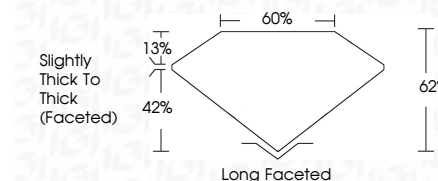
Red symbols indicate internal characteristics.
Green symbols indicate external characteristics.

COLOR

D E F G H I J Faint Very Light Light

CLARITY

FL	IF	VVS ¹⁻²	VS ¹⁻²	SI ¹⁻²	I ¹⁻³
Flawless	Internally Flawless	Very Very Slightly Included	Very Slightly Included	Slightly Included	Included



ADDITIONAL GRADING INFORMATION

Polish **EXCELLENT**

Symmetry **VERY GOOD**

Fluorescence **SLIGHT**

Inscription(s) **IGI LG750540742**

Comments: This Laboratory Grown Diamond was created by Chemical Vapor Deposition (CVD) growth process.

Indications of post-growth treatment.



IGI



May 28, 2026
IGI Report No LG750540742
CUSHION BRILLIANT
2.10 CARATS
9.09 X 6.68 X 4.14 MM
FANCY INTENSE PINK
VVS 2
62%
60%
Slightly Thick To Thick (Faceted)
Long Faceted
EXCELLENT
VERY GOOD
SLIGHT
IGI LG750540742

Comments: This Laboratory Grown Diamond was created by Chemical Vapor Deposition (CVD) growth process. Indications of post-growth treatment.