



ELECTRONIC COPY

LG750540741
Report verification at igi.org



May 25, 2026
IGI Report Number **LG750540741**

Description **LABORATORY GROWN DIAMOND**

Shape and Cutting Style **CUSHION BRILLIANT**

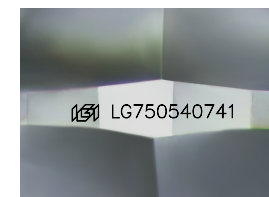
Measurements **9.53 X 7.65 X 4.99 MM**

GRADING RESULTS

Carat Weight **3.02 CARATS**

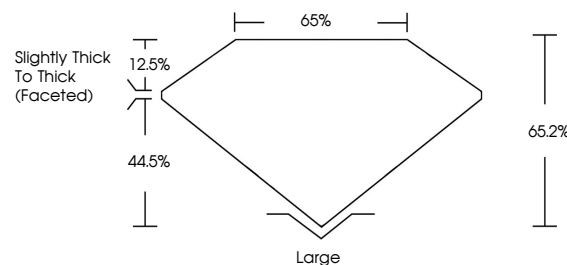
Color Grade **FANCY INTENSE PINK**

Clarity Grade **VVS 2**

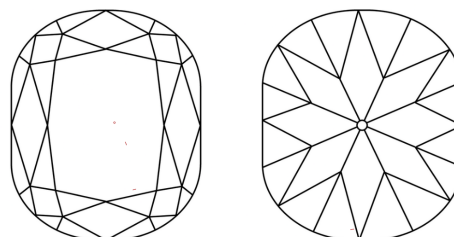


Sample Image Used

PROPORTIONS



CLARITY CHARACTERISTICS



KEY TO SYMBOLS

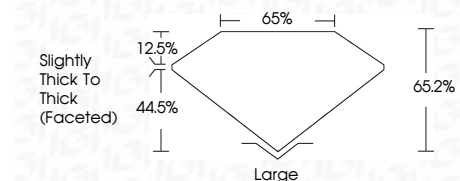
Red symbols indicate internal characteristics.
Green symbols indicate external characteristics.

COLOR

D E F G H I J Faint Very Light Light

CLARITY

FL	IF	VVS ¹⁻²	VS ¹⁻²	SI ¹⁻²	I ¹⁻³
Flawless	Internally Flawless	Very Very Slightly Included	Very Slightly Included	Slightly Included	Included



ADDITIONAL GRADING INFORMATION

Polish **EXCELLENT**

Symmetry **EXCELLENT**

Fluorescence **SLIGHT**

Inscription(s) **IGI LG750540741**

Comments: This Laboratory Grown Diamond was created by Chemical Vapor Deposition (CVD) growth process. Indications of post-growth treatment.



May 25, 2026
IGI Report No LG750540741
CUSHION BRILLIANT
9.53 X 7.65 X 4.99 MM
3.02 CARATS
FANCY INTENSE PINK
VVS 2
65.2%
Slightly Thick To Thick (Faceted)
Large
EXCELLENT
EXCELLENT
SLIGHT
IGI LG750540741

Comments: This Laboratory Grown Diamond was created by Chemical Vapor Deposition (CVD) growth process. Indications of post-growth treatment.