



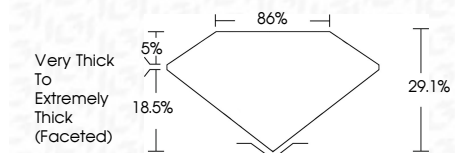
ELECTRONIC COPY

LG750540687
Report verification at igi.org



May 9, 2026
IGI Report Number **LG750540687**
Description **LABORATORY GROWN DIAMOND**
Shape and Cutting Style **ROUND ROSE CUT**
Measurements **8.37 - 8.34 X 2.43 MM**

GRADING RESULTS
Carat Weight **1.62 CARAT**
Color Grade **FANCY VIVID GREEN**
Clarity Grade **VS 1**



ADDITIONAL GRADING INFORMATION
Polish **EXCELLENT**
Symmetry **EXCELLENT**
Fluorescence **NONE**
Inscription(s) **IGI LG750540687**
Comments: This Laboratory Grown Diamond was created by Chemical Vapor Deposition (CVD) growth process. Indications of post-growth treatment.



May 9, 2026
IGI Report No **LG750540687**
ROUND ROSE CUT
1.62 CARAT
Carat Weight **FANCY VIVID GREEN**
Color Grade **VS 1**
Depth **29.1%**
Table **86%**
Girdle **Very Thick to Extremely Thick (Faceted)**
Culet **EXCELLENT**
Polish **EXCELLENT**
Symmetry **EXCELLENT**
Fluorescence **NONE**
Inscription(s) **IGI LG750540687**
Comments: This Laboratory Grown Diamond was created by Chemical Vapor Deposition (CVD) growth process. Indications of post-growth treatment.

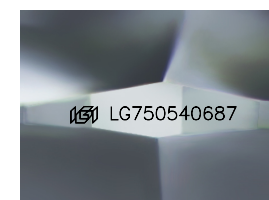
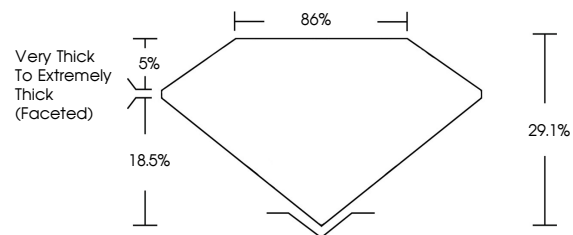
May 9, 2026
IGI Report Number **LG750540687**
Description **LABORATORY GROWN DIAMOND**
Shape and Cutting Style **ROUND ROSE CUT**
Measurements **8.37 - 8.34 X 2.43 MM**

GRADING RESULTS
Carat Weight **1.62 CARAT**
Color Grade **FANCY VIVID GREEN**
Clarity Grade **VS 1**

ADDITIONAL GRADING INFORMATION
Polish **EXCELLENT**
Symmetry **EXCELLENT**
Fluorescence **NONE**
Inscription(s) **IGI LG750540687**

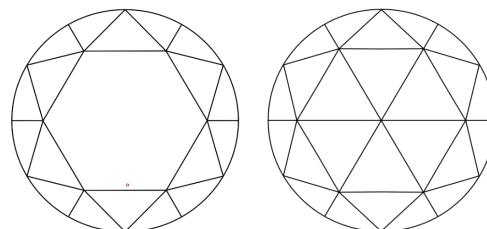
Comments: This Laboratory Grown Diamond was created by Chemical Vapor Deposition (CVD) growth process. Indications of post-growth treatment.

PROPORTIONS



Sample Image Used

CLARITY CHARACTERISTICS



KEY TO SYMBOLS

Red symbols indicate internal characteristics.
Green symbols indicate external characteristics.

COLOR

D E F G H I J Faint Very Light Light

CLARITY

FL	IF	VS ¹⁻²	VS ¹⁻²	SI ¹⁻²	I ¹⁻³
Flawless	Internally Flawless	Very Very Slightly Included	Very Slightly Included	Slightly Included	Included

