



ELECTRONIC COPY

LG750540681
Report verification at igi.org



February 13, 2026

IGI Report Number **LG750540681**

Description **LABORATORY GROWN DIAMOND**

Shape and Cutting Style **OLD EUROPEAN CUT**

Measurements **7.84 - 7.91 X 4.95 MM**

GRADING RESULTS

Carat Weight **2.00 CARATS**

Color Grade **LIGHT PINK**

Clarity Grade **VS 2**

February 13, 2026
IGI Report Number **LG750540681**
Description **LABORATORY GROWN DIAMOND**
Shape and Cutting Style **OLD EUROPEAN CUT**
Measurements **7.84 - 7.91 X 4.95 MM**

GRADING RESULTS

Carat Weight **2.00 CARATS**

Color Grade **LIGHT PINK**

Clarity Grade **VS 2**

ADDITIONAL GRADING INFORMATION

Polish **EXCELLENT**

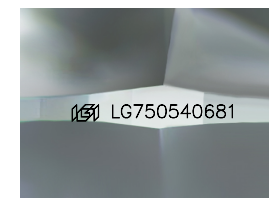
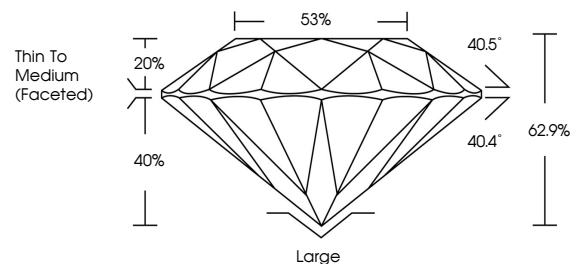
Symmetry **EXCELLENT**

Fluorescence **SLIGHT**

Inscription(s) **IGI LG750540681**

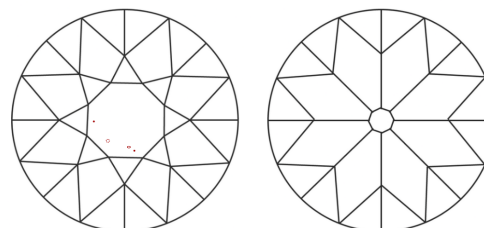
Comments: This Laboratory Grown Diamond was created by Chemical Vapor Deposition (CVD) growth process. Indications of post-growth treatment.

PROPORTIONS



Sample Image Used

CLARITY CHARACTERISTICS



KEY TO SYMBOLS

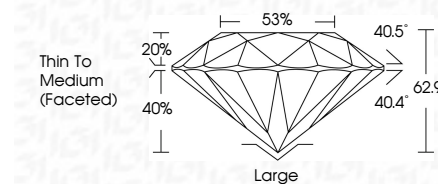
Red symbols indicate internal characteristics.
Green symbols indicate external characteristics.

COLOR

D E F G H I J Faint Very Light Light

CLARITY

FL	IF	VS ¹⁻²	VS ¹⁻²	SI ¹⁻²	I ¹⁻³
Flawless	Internally Flawless	Very Very Slightly Included	Very Slightly Included	Slightly Included	Included



ADDITIONAL GRADING INFORMATION

Polish **EXCELLENT**

Symmetry **EXCELLENT**

Fluorescence **SLIGHT**

Inscription(s) **IGI LG750540681**

Comments: This Laboratory Grown Diamond was created by Chemical Vapor Deposition (CVD) growth process. Indications of post-growth treatment.



IGI



February 13, 2026
IGI Report No LG750540681
OLD EUROPEAN CUT

2.00 CARATS
Carat Weight
LIGHT PINK
Color Grade

VS 2
Clarity Grade
62.9%
Depth
85%
Table
Large
Thin To Medium (Faceted)
Cutlet
EXCELLENT
Polish
EXCELLENT
Symmetry
SLIGHT
Fluorescence
IGI LG750540681
Inscription(s)

Comments: This Laboratory Grown Diamond was created by Chemical Vapor Deposition (CVD) growth process. Indications of post-growth treatment.